

RESOURCE DEVELOPMENT IN ALASKA

DOT&PF READY?

May 2007

John MacKinnon
Deputy Commissioner



DOT&PF's Mission

Provide for the movement of people and goods and the delivery of state services.



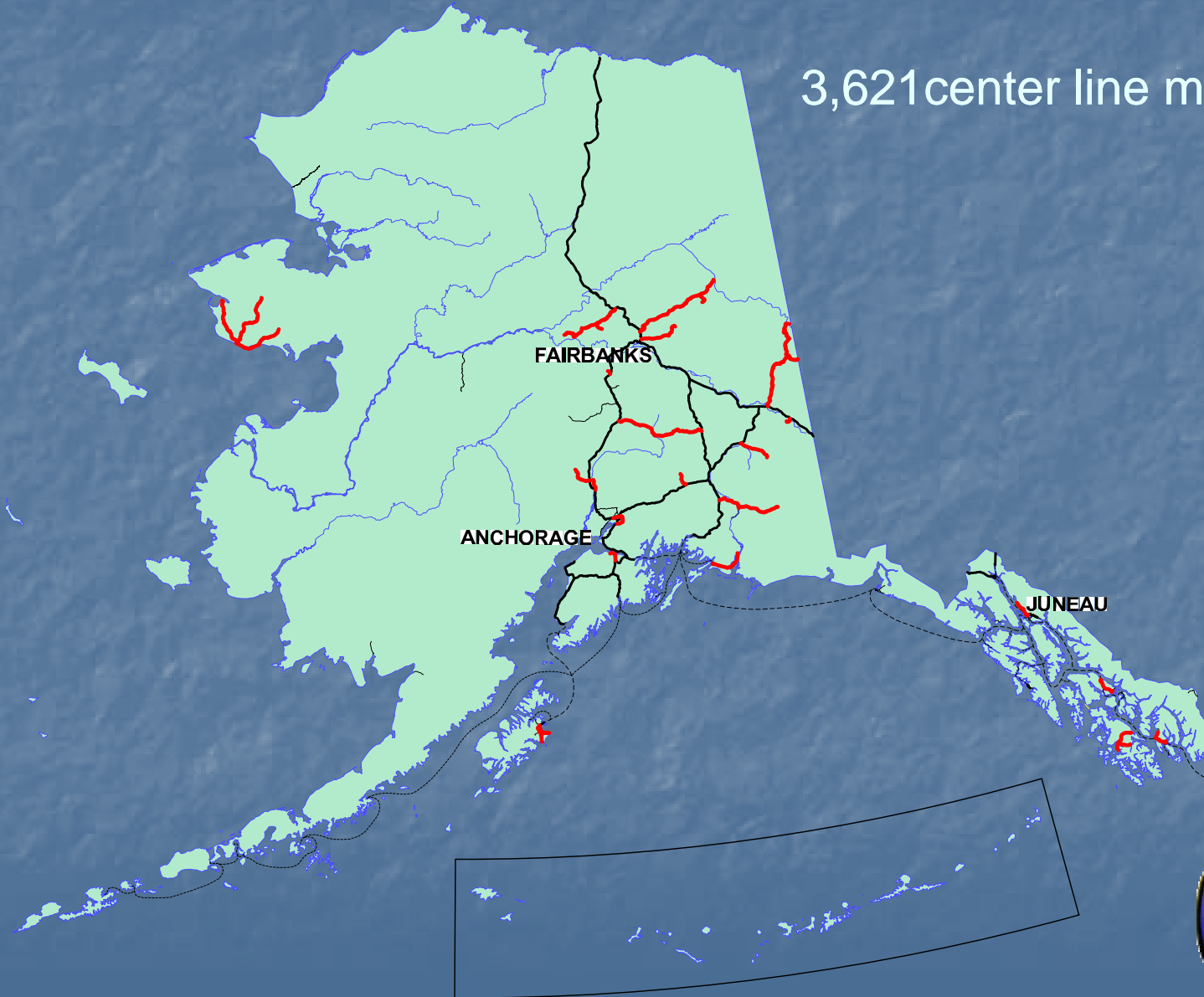
DOT&PF Regional Boundaries

Main Office Locations
Headquarters – Juneau
Central Region – Anchorage
Northern Region – Fairbanks
Southeast Region - Juneau



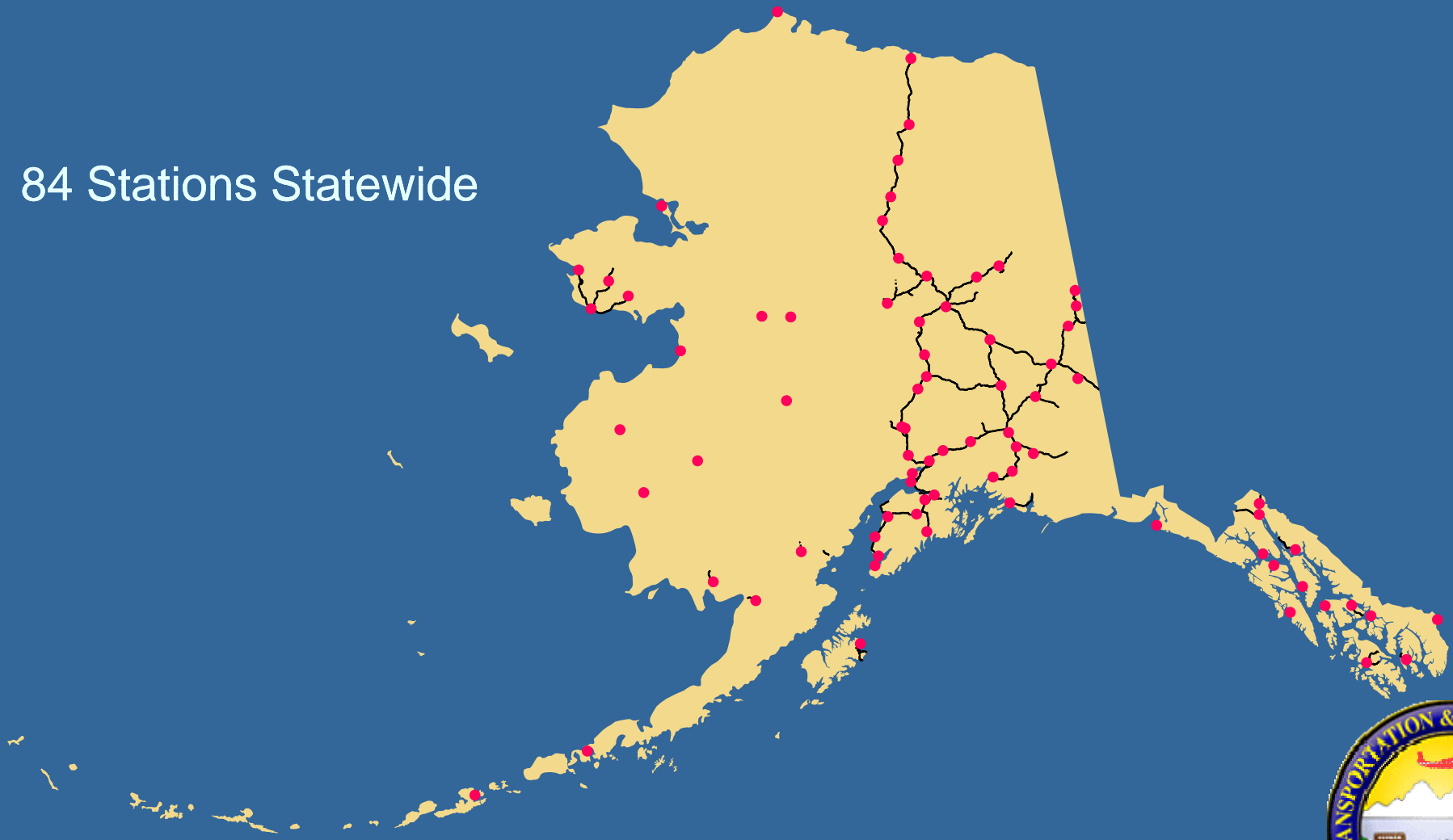
Alaska's Highways

3,621 center line miles



DOT&PF Maintenance Stations

84 Stations Statewide



DOT&PF Ports & Harbors

29 State-owned Harbors

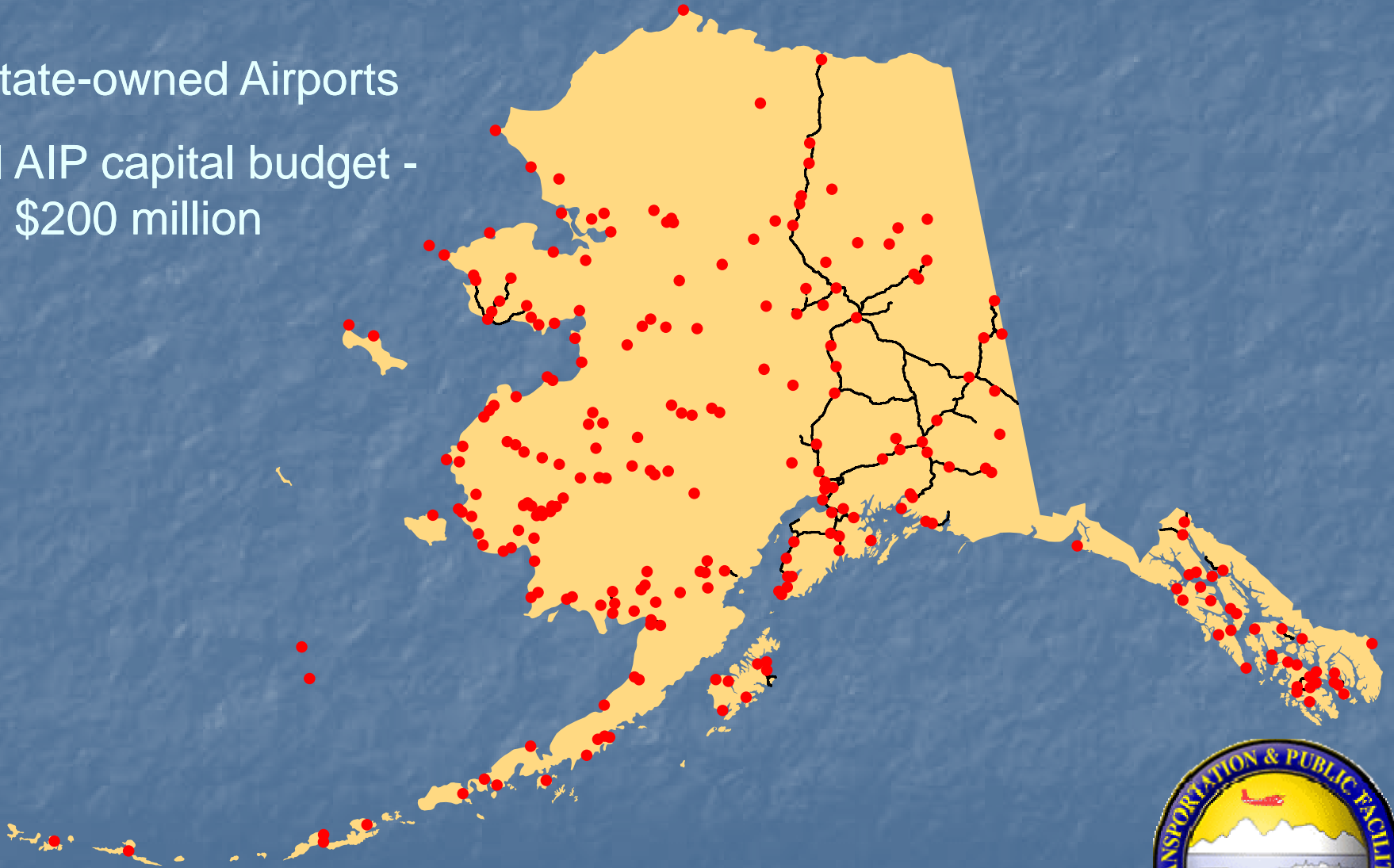
12 Operated by agreement
by local government



DOT&PF Airports

258 State-owned Airports

Annual AIP capital budget -
\$200 million



DOT&PF Airports

- Largest Airport Operator in the U.S.
 - 258 State owned & operated airports
 - 2 Internationals - Anchorage & Fairbanks
 - 21 Rural Certificated
 - 235 Community
 - 134 Rural airports have maintenance contracted out for a total cost of \$3 million with an average cost of \$27,000 per airport

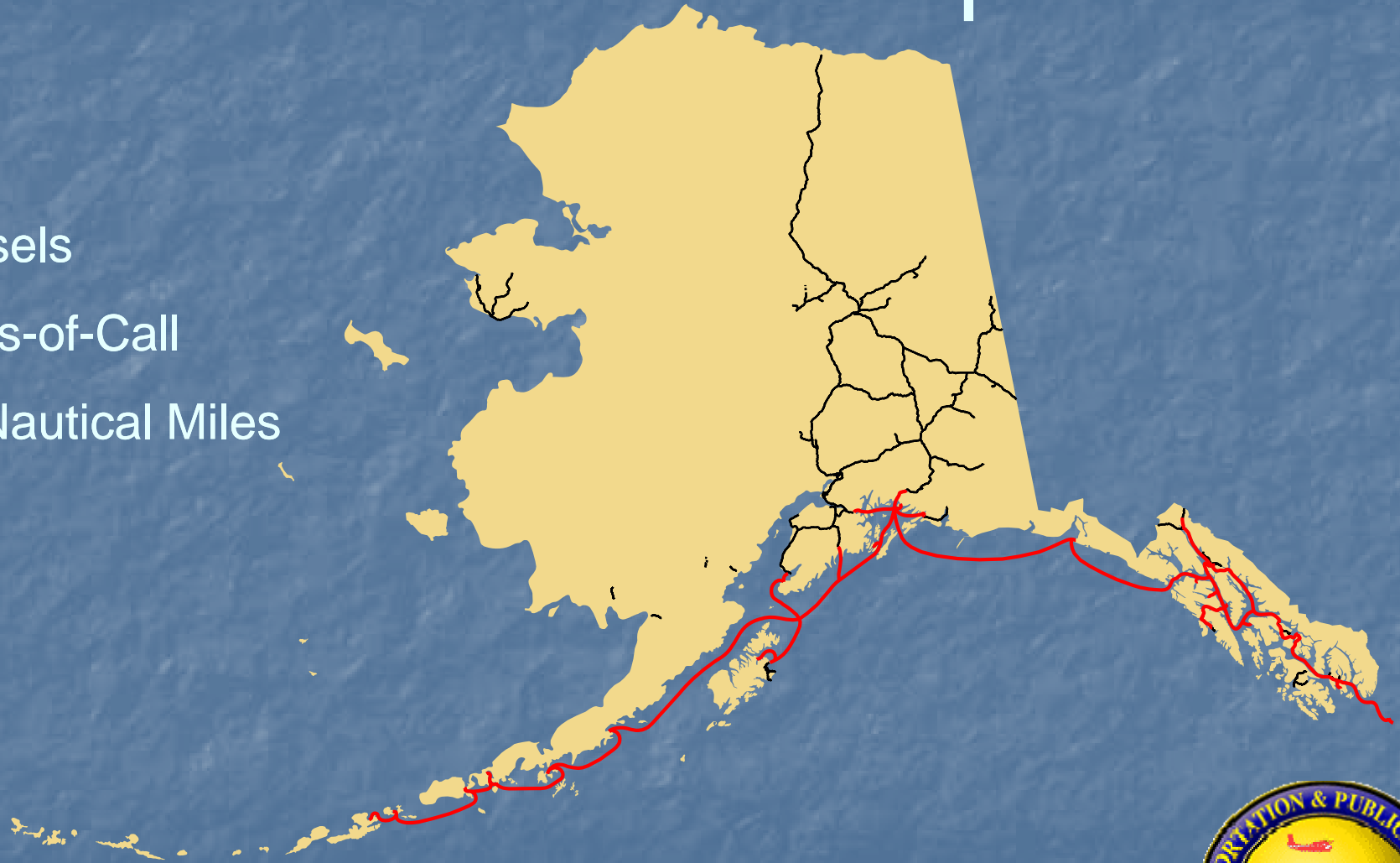


AMHS Route Map

11 Vessels

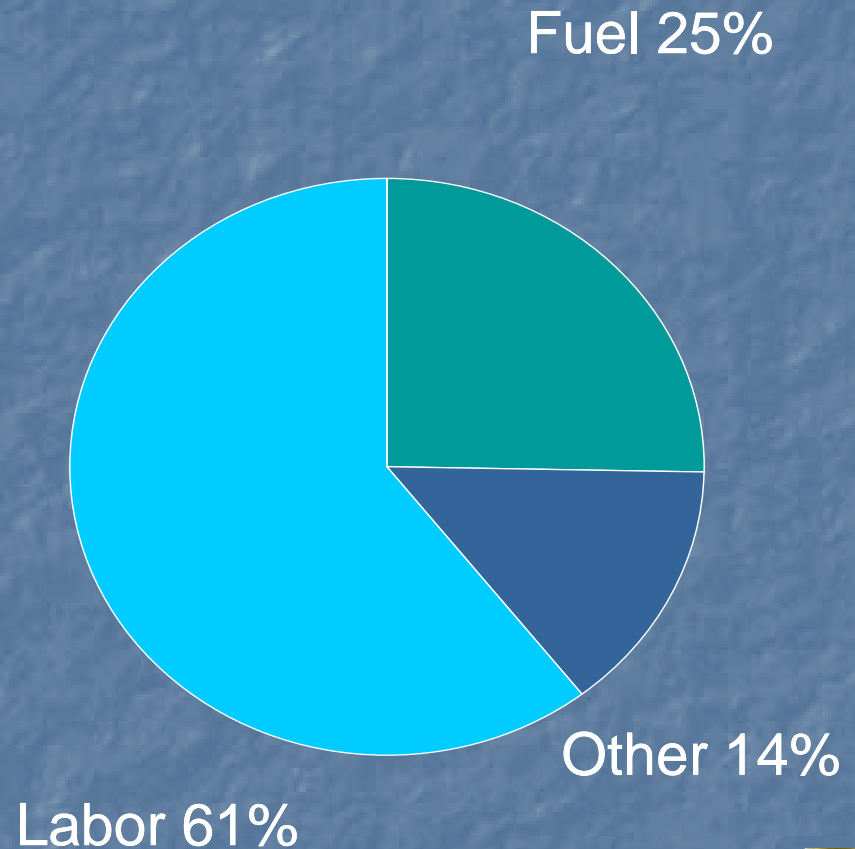
32 Ports-of-Call

3,500 Nautical Miles



Alaska Marine Highway System

- 11 vessels (4 are over 40 years old)
- Transits 3,500 total nautical miles and serves 32 ports from Bellingham, WA to Unalaska
- CY 2006 Statistics - 307,220 passengers and 97,070 vehicles
- Other costs include equipment repairs, Risk Management, food, marketing, laundry, etc.

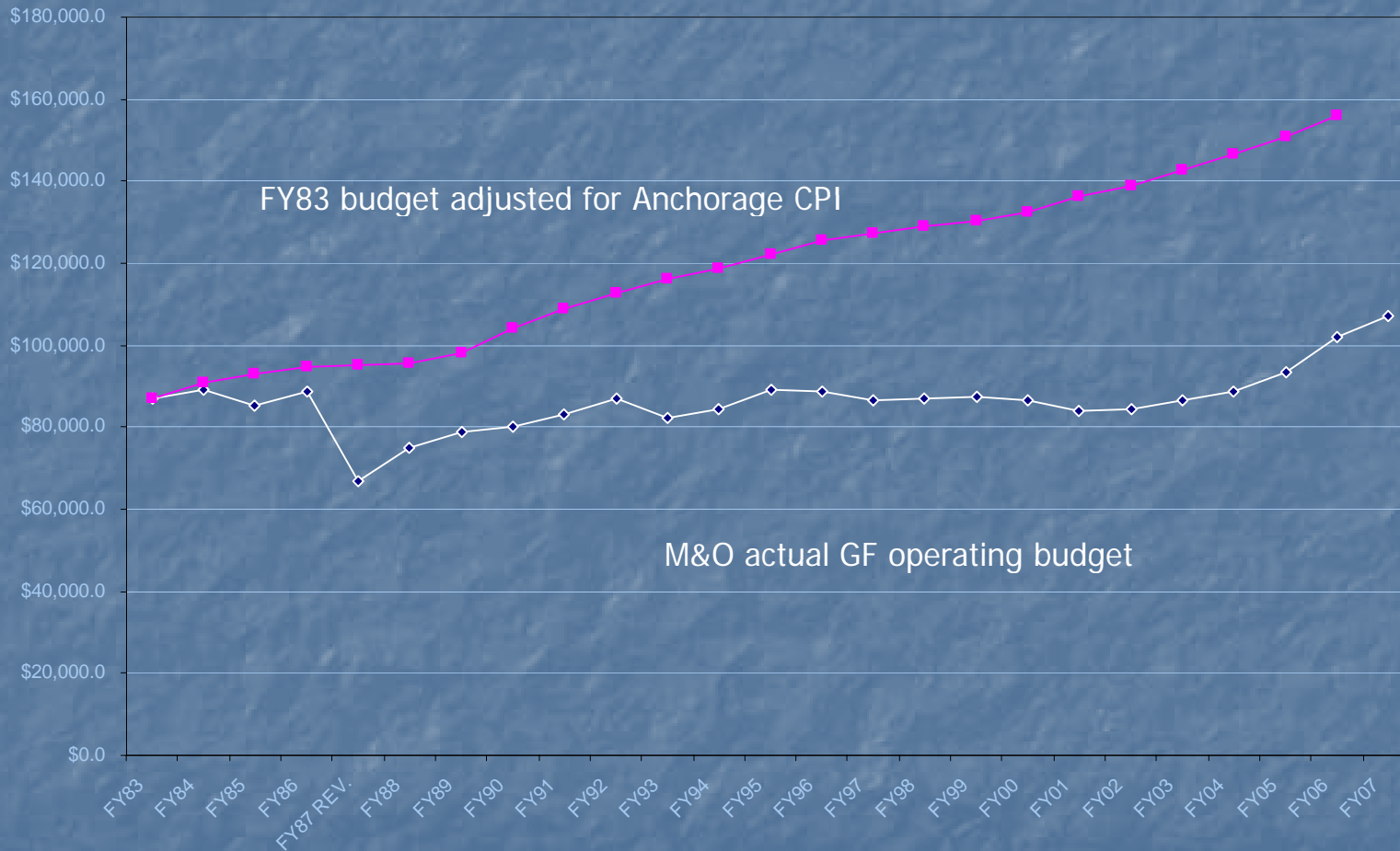


Facilities Maintenance

- 700 buildings
 - 4.2 million sq. feet
 - \$346 million original cost
 - \$1 billion estimated replacement value
- 213 buildings are over 30 years old (some from the 1940's and 1950's)



Maintenance and Operations General Fund Authorizations



Disasters

- Storms
 - Parks Highway (\$3.8m)
 - Seward (\$1.6m)
 - Richardson/Copper River/McCarthy Highways (\$28.6m)
- Hooper Bay school fire (\$.6m)



Copper River Highway



Keystone Canyon



Construction Program

| Mode/System Contracts | Active Projects | Current Active |
|--------------------------|--------------------|----------------|
| Highways and Ferries | 190 | \$1,182.8M |
| Aviation | 89 | \$555.7M |
| Reimbursable | 21 | \$21.7M |
| Harbors | 6 | \$4.7M |



Historical Construction Expenditures AMHS, Highways and Aviation

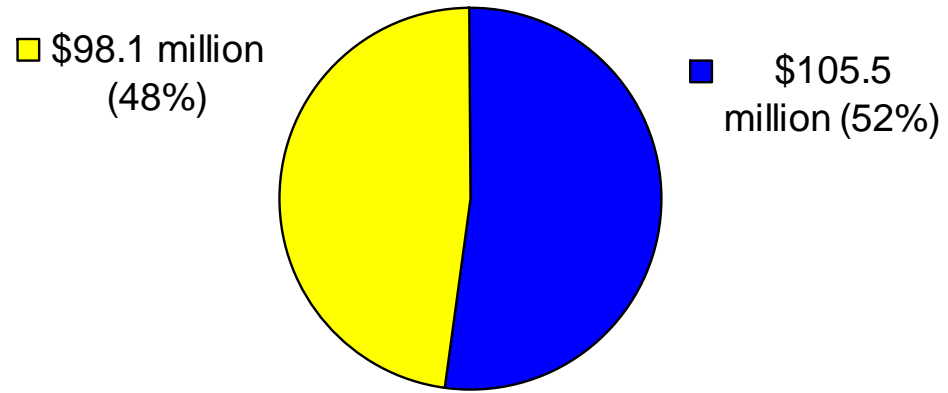


Key Department Challenges

- Recruiting and retaining staff
- Preserving and protecting Alaska's infrastructure
- Major proposed transportation projects
- AMHS configuration
- Gas line readiness



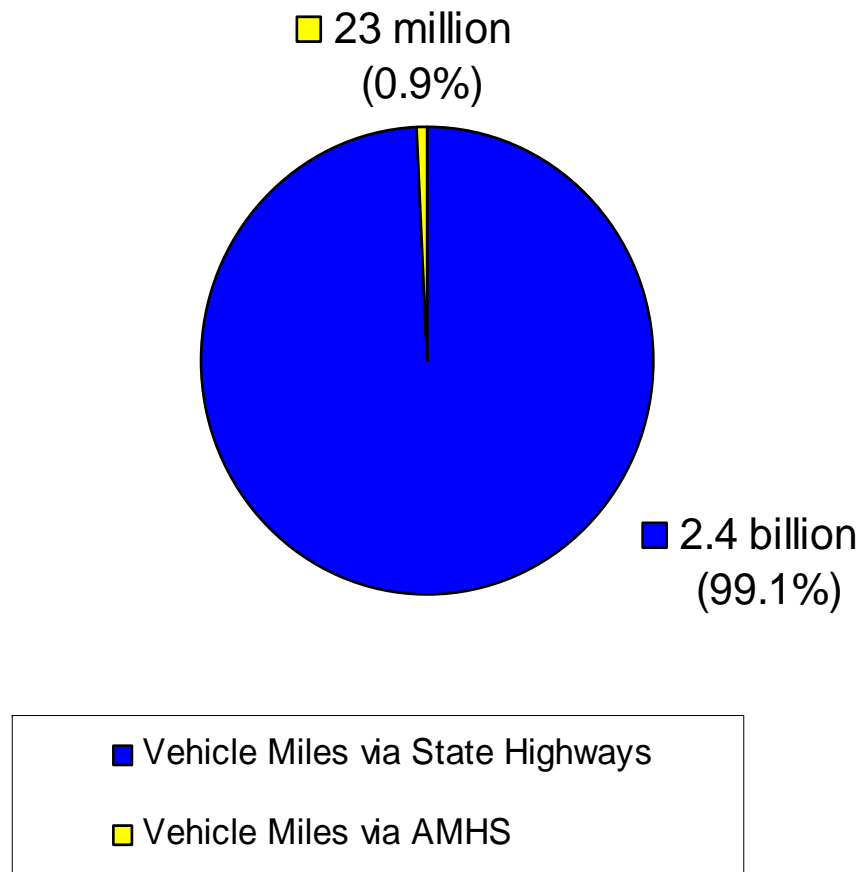
General Fund Maintenance and Operations Cost



- Cost to Maintain and Operate Highways and Aviation
- Cost to Maintain and Operate AMHS



Vehicle Miles Travelled



DOT STUDIED NEEDS FOR GASLINE - scope

- Identify statewide transportation infrastructure to support gas pipeline construction
- Meet with DOT, ARRC, ports and local governments to identify potential projects
- Meet with producers to validate assumptions used to set priorities



Construction And Logistics Routes Identified

- Assumed construction route is from Prudhoe Bay through Canada
- 3 logistic routes serve construction route based on ports of entry:
 - Route A: Seward / Whittier / Anchorage / MacKenzie
 - Route B: Valdez
 - Route C: Skagway / Haines



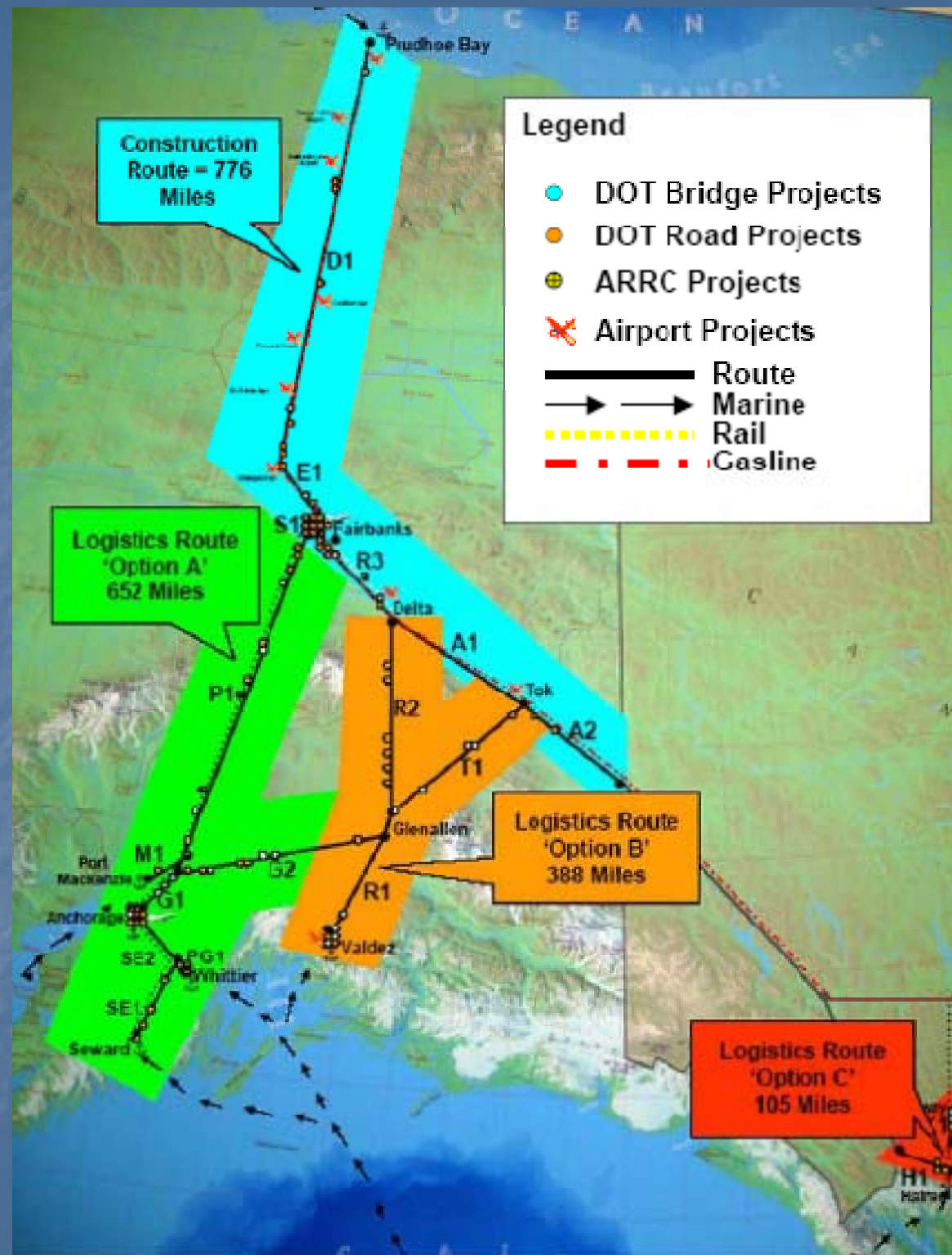
Projects Study Identified

- 267 potential Projects Identified:
 - 11 Airports
 - 183 Roads and bridges
 - 78 Rail
 - 24 Ports / harbors



Statewide Infrastructure Priorities for Gasline Study

| ROUTE KEY | | | |
|-----------|-----------------|----------|--------|
| ID | ROUTE | MP START | MP END |
| A1 | Alaska | 1422 | 1315 |
| A2 | Alaska | 1314 | 1221 |
| D1 | Dalton Hwy | 0 | 415 |
| E1 | Elliott | 0 | 68 |
| G1 | Glenn Hwy | 0 | 34 |
| G2 | Glenn Hwy | 35 | 180 |
| H1 | Haines | 0 | 39 |
| K1 | Klondike | 0 | 66 |
| M1 | Pt. MacKenzie | 0 | 10 |
| IP1 | Parks Hwy | 0 | 323 |
| PG1 | Portage Glacier | 0 | 5 |
| R1 | Richardson Hwy | 0 | 117 |
| R2 | Richardson Hwy | 118 | 268 |
| R3 | Richardson Hwy | 269 | 362 |
| S1 | Steese Hwy | 0 | 11 |
| SE1 | Seward Hwy | 0 | 78 |
| SE2 | Seward Hwy | 79 | 125 |
| T1 | Tok Cutoff | 0 | 121 |



Priorities

- Priority 1:
 - Projects required prior to pipeline construction
- Priority 2:
 - Projects located in construction of logistics routes A, B, C
- Priority 3:
 - Rehabilitation projects to occur post pipeline construction



Roads to Resources

It's the little things or when opportunity
knocks



Goal – help the mega projects

- Pebble
- Colville River Rd – access to NPRA
- Donlin Creek Mine
- Pogo Mine
- Bullen point



Reality – small projects give biggest bang for \$

- Shirley Towne Bridge
- Hatcher Pass Rd improvements
- Cascade Point Rd/Kennington Mine Rg
- Glacier Creek Rd
- Ruby to Poorman Rd



Questions?

