

# Meeting the Human Resources Challenges of Northern Transportation



**Axel Meisen**, CM, PhD, PEng, FCAE, FCIC, FIEI  
**Chair of Foresight**

Alberta Innovates – Technology Futures, Edmonton, Alberta, Canada

# Acknowledgements

The assistance provided by Ms Lynn Fleming with gathering background information for this presentation is gratefully acknowledged. Certain images in this presentation were taken from publicly available websites, with their use being restricted to this presentation.

# Disclaimer

The ideas and proposals advanced in this presentation are the results of my futures work at AITF and elsewhere. They do not represent policies, positions or commitments of the Government of Alberta or AITF.





**Elizabeth Penashue and husband, Labrador**



# Sheshatshiu Innu School, Labrador

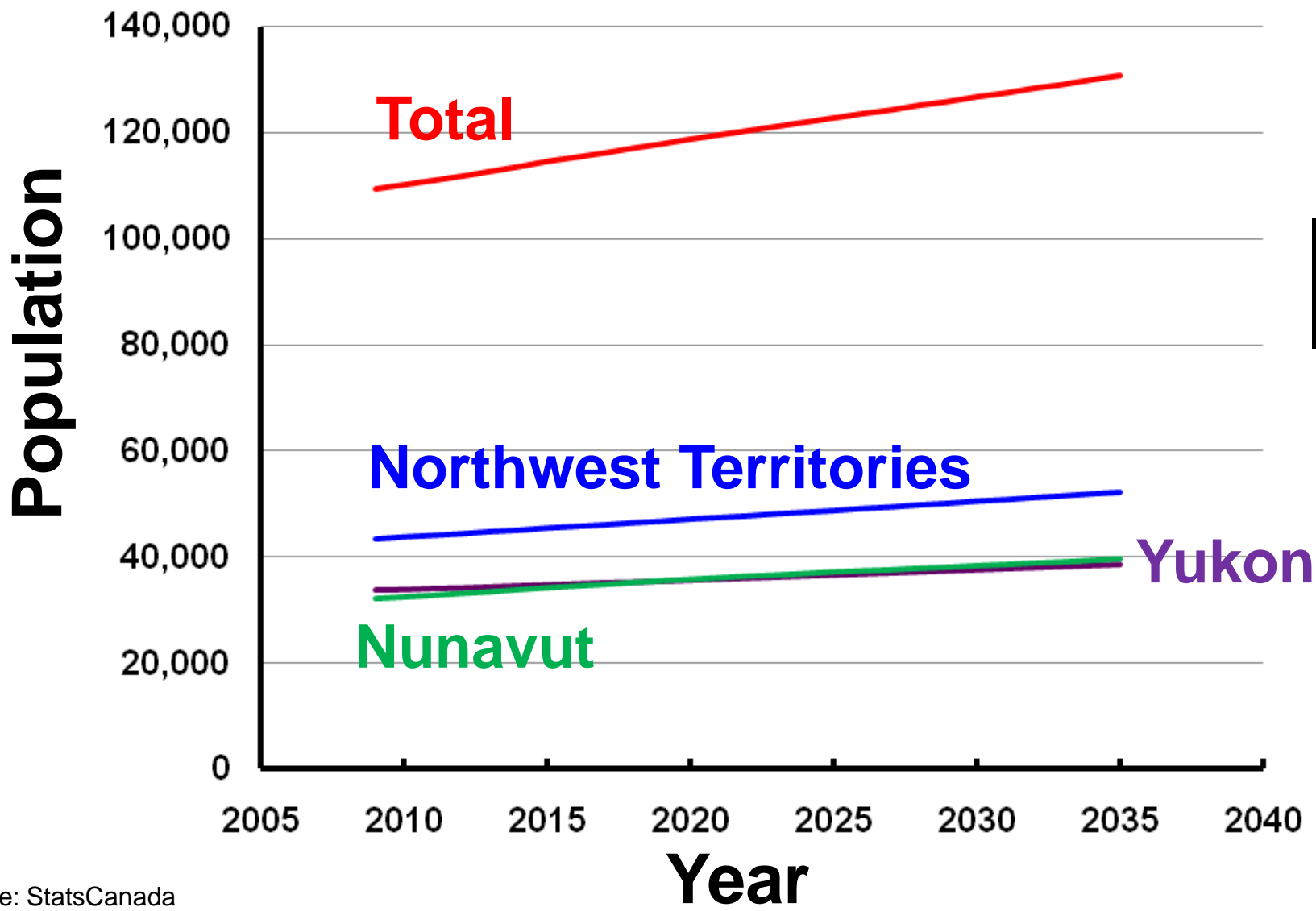




# Innu School Question: How to Protect Offshore Oil Platforms Against Icebergs



# Northern Canadian Populations

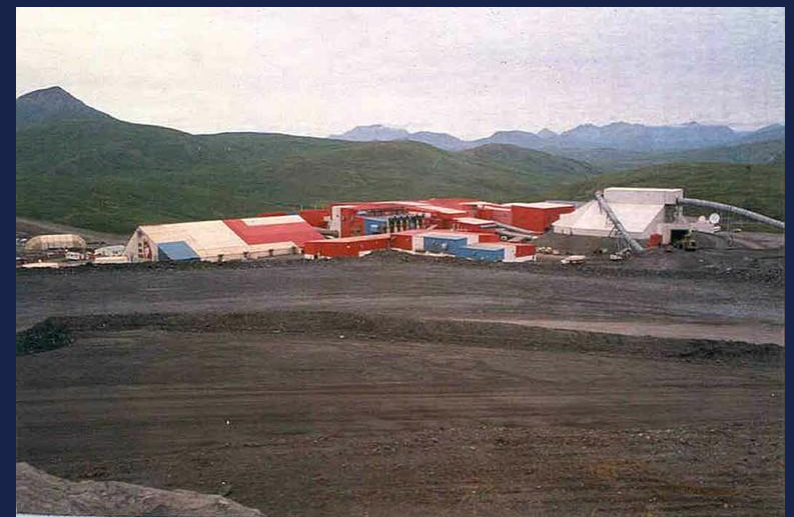
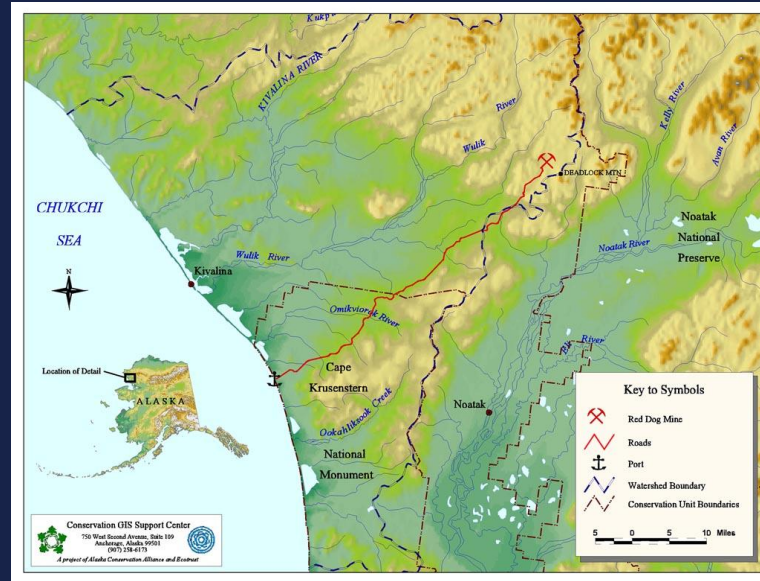


Source: StatsCanada



# Transportation: Minerals

## Red Dog Mine (Alaska, USA)



# Transportation: Minerals

## Red Dog Mine (Alaska, USA)





# Transportation: Pangnirtung (Nunavut, Canada)



# Transportation: Fuel and Goods Pangnirtung (Nunavut, Canada)





# Transportation: Fish

## Pangnirtung (Nunavut, Canada)





# Transportation: Fish Pangnirtung (Nunavut, Canada)





# Transportation: Fresh Fish Pangnirtung (Nunavut, Canada)



# Transportation: People Pangnirtung (Nunavut, Canada)





# Transportation: Tourists

## Auyuittuq National Park (Nunavut)



# Pangnirtung, Tourists Auyuittuq National Park (Nunavut)

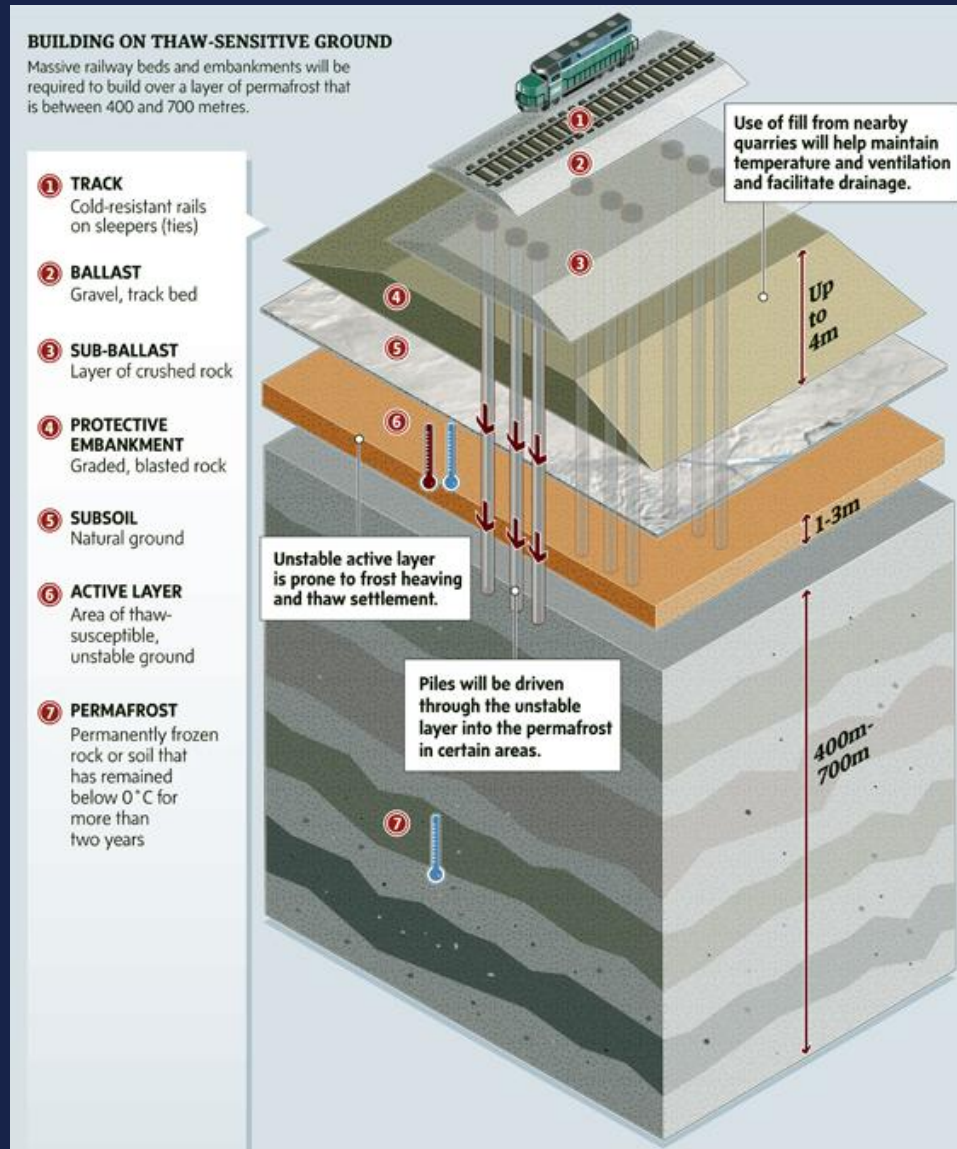




# Northern Transportation: Emerging Modes – Railways, Ships



# Northern Transportation: Emerging Modes – Railways





# Northern Transportation: Emerging Modes – Ships



# Northern Transportation: Emerging Modes – Airships/Hybrids



**~40 t lift capacity**



# Transportation Education: Motivation through Experiential Learning

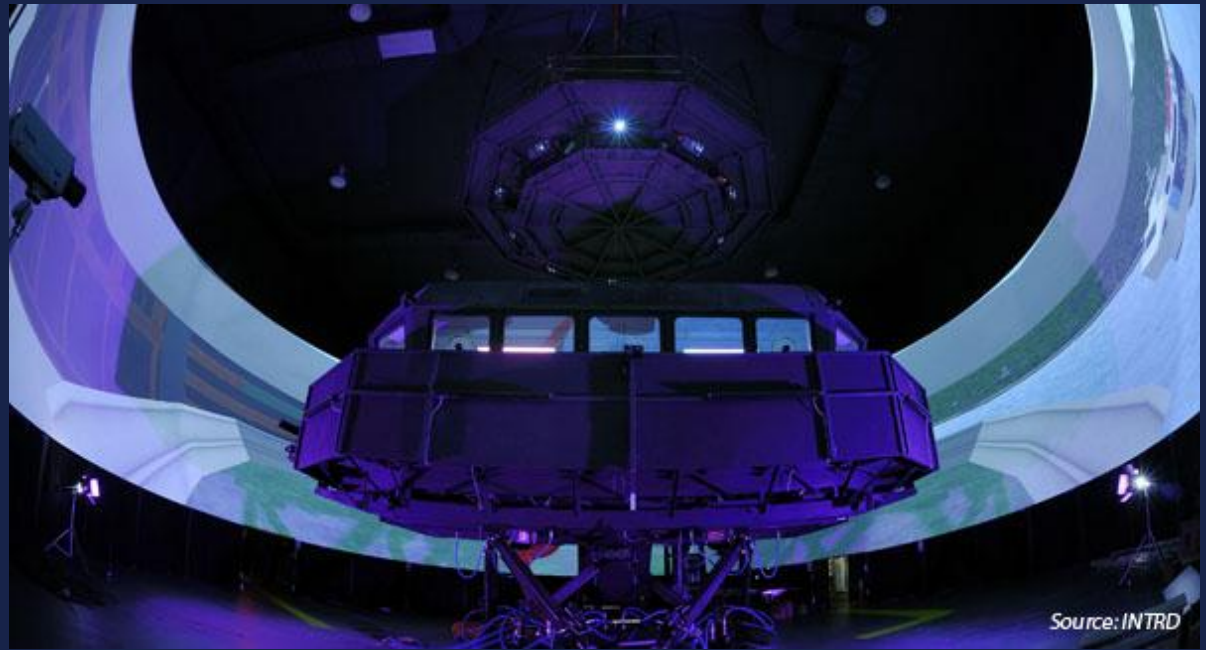


# Transportation Education: Simulation



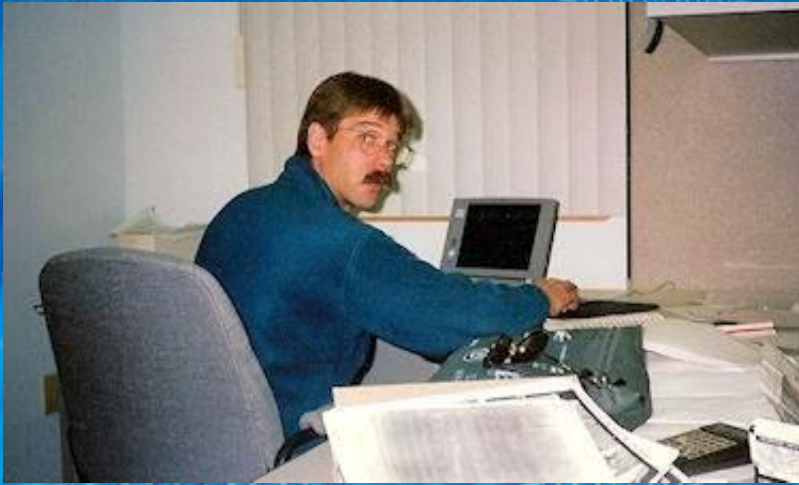


# Transportation Education: Simulation



**Bridge Simulator for Harsh Environments**  
**Marine Institute, Memorial University of Newfoundland**

# Transportation Education: Distance Learning for Northerners





# Proposal #1: Provide Professional Transportation Programs for Northerners

## Focus:

- **Experiential Learning**
- **Simulation-rich**
- **Distance Learning**
- **Business and Technology**
- **Creativity**

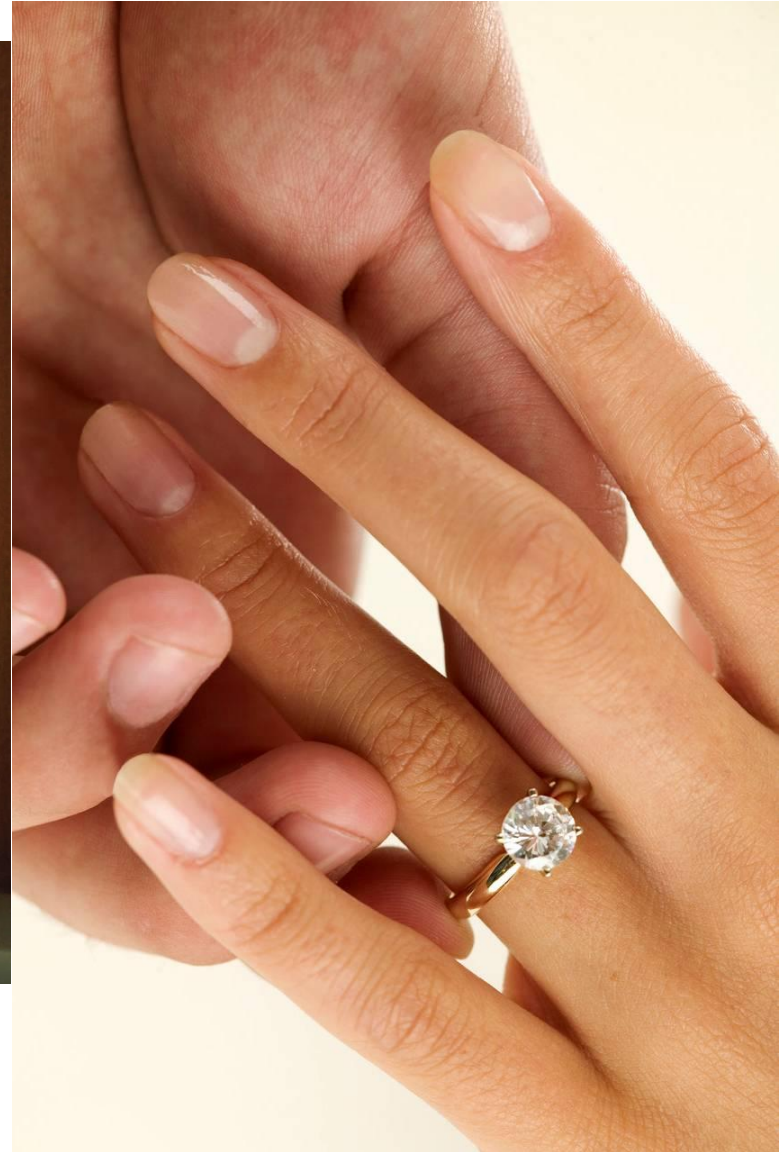


**University of the Arctic**



**THE VAN HORNE INSTITUTE**

# Proposal #2: Articulate and Share the Higher Purposes of Northern Transportation





# Proposal #2: Articulate and Share the Higher Purposes of Northern Transportation





# Meeting the Human Resources Challenges of Northern Transportation

Northern Transportation Conference: Circumpolar Challenges and Opportunities  
Anchorage, Alaska, USA, September 18 - 20, 2011



**Axel Meisen**, CM, PhD, PEng, FCAE, FCIC, FIEI  
Chair of Foresight

Alberta Innovates – Technology Futures, Edmonton, Alberta, Canada