

THE FEDERAL GOVERNMENT'S ROLE, STRATEGY, & VISION FOR THE NORTH

AN ARCTIC TRANSPORTATION PERSPECTIVE

Presented to: Northern Transportation Conference

By: Charlene Derry, International Liaison Officer, FAA

Date: September 19, 2011



Federal Aviation
Administration

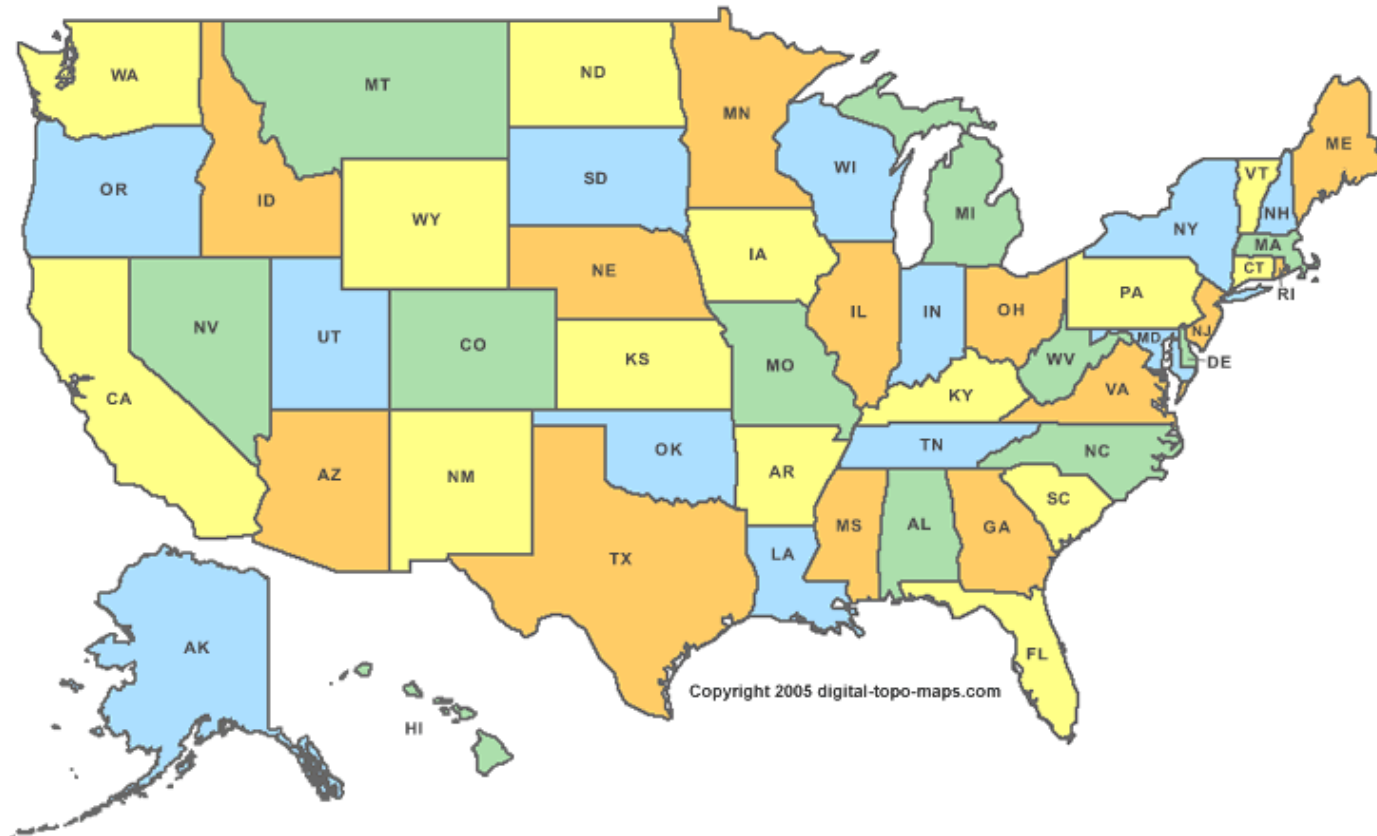


OVERVIEW

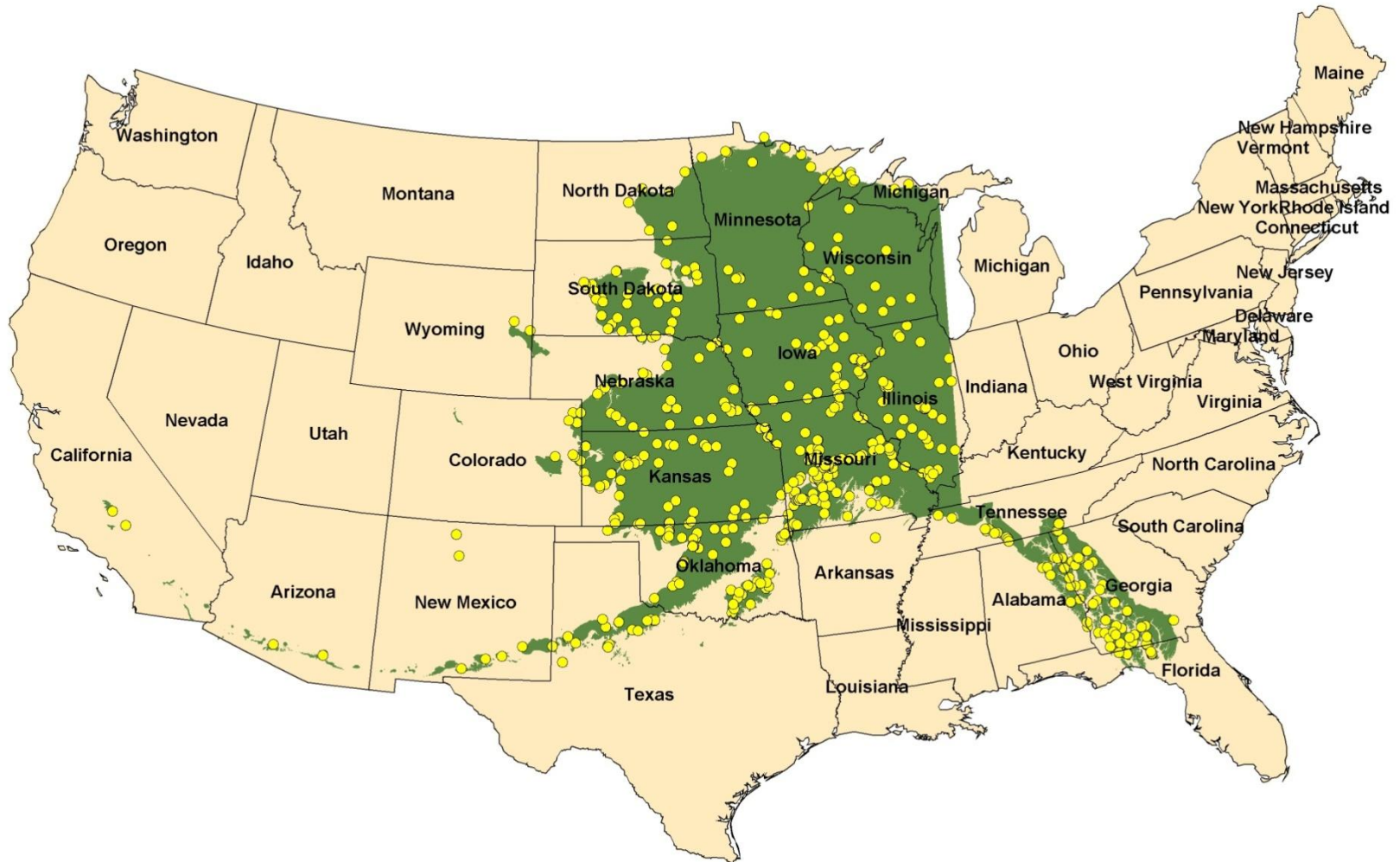
- **U.S. NORTHERN TRANSPORTATION DEFINED**
- **US DOT: FAA and MARAD**
 - Roles
- **Intergovernmental and International Fora**
- **Strategies and Products**



WHERE NOT

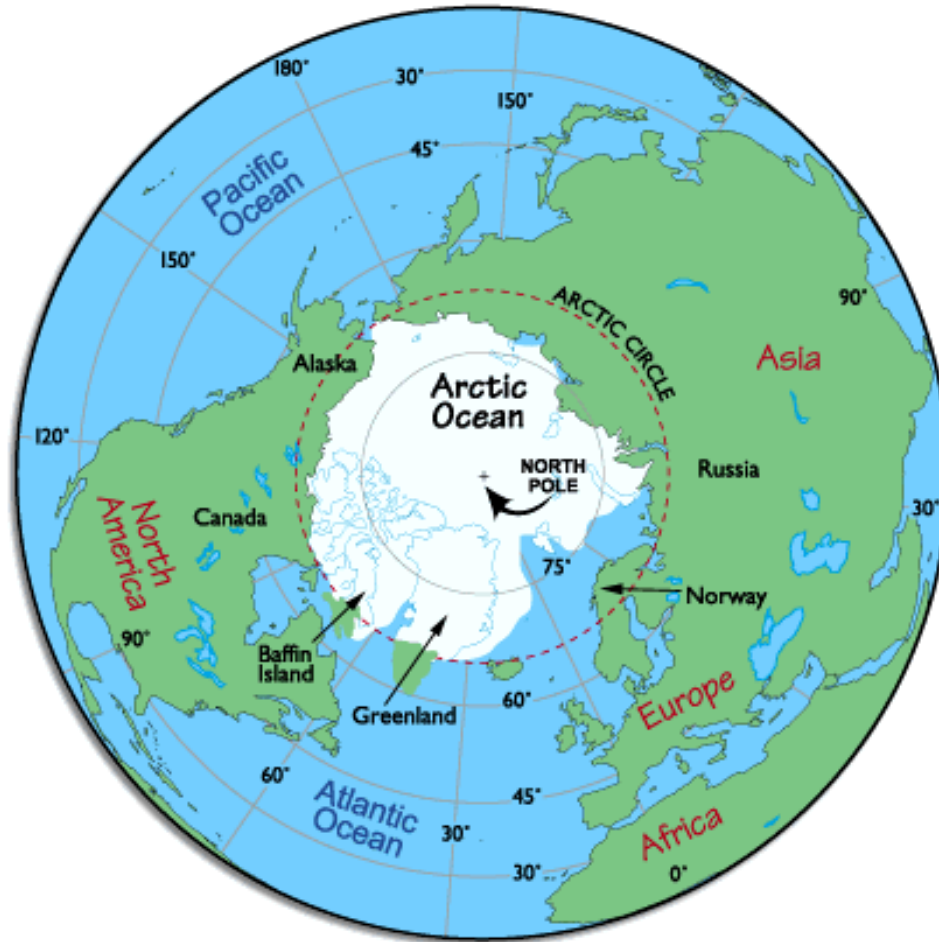


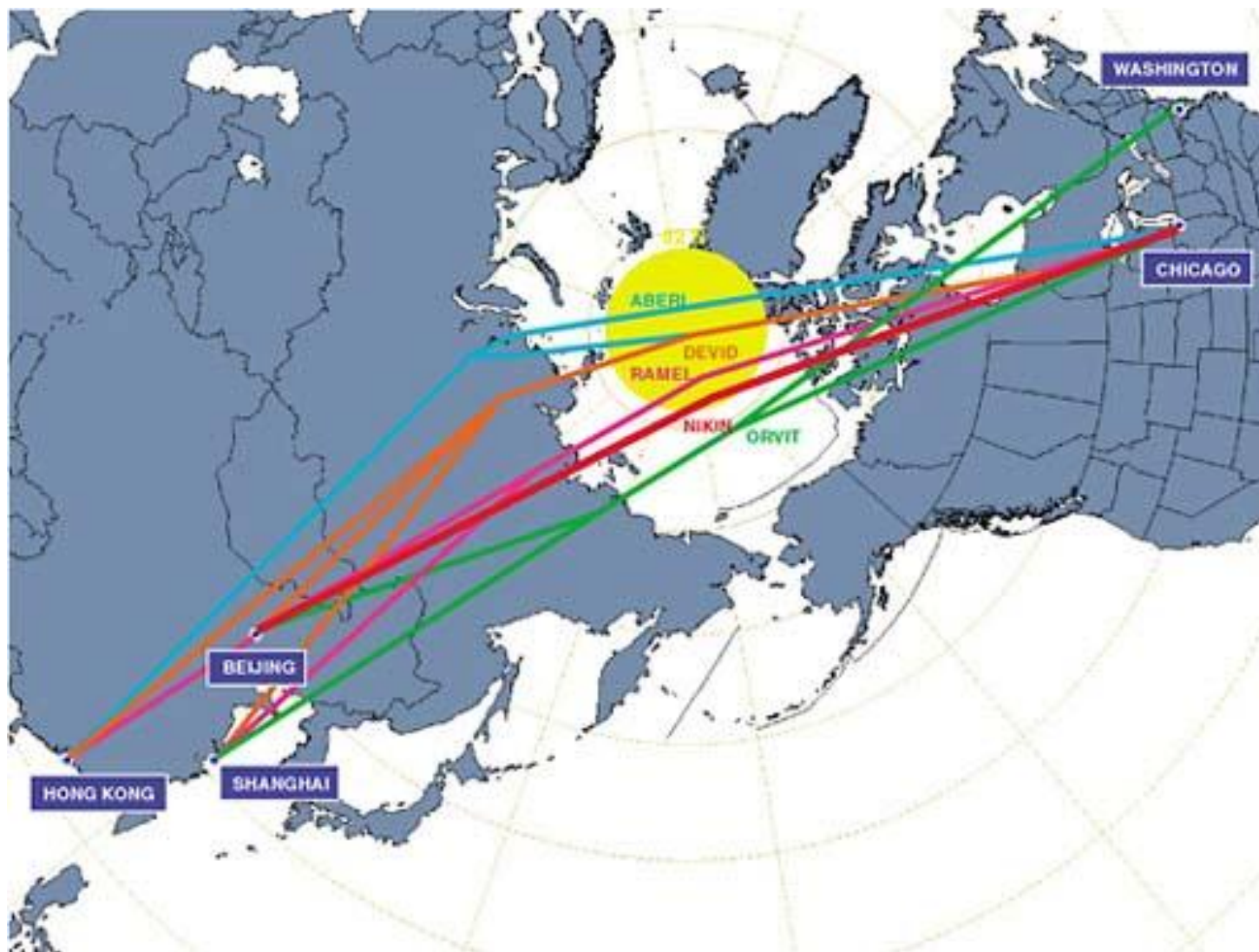
A LOT OF GEOGRAPHY



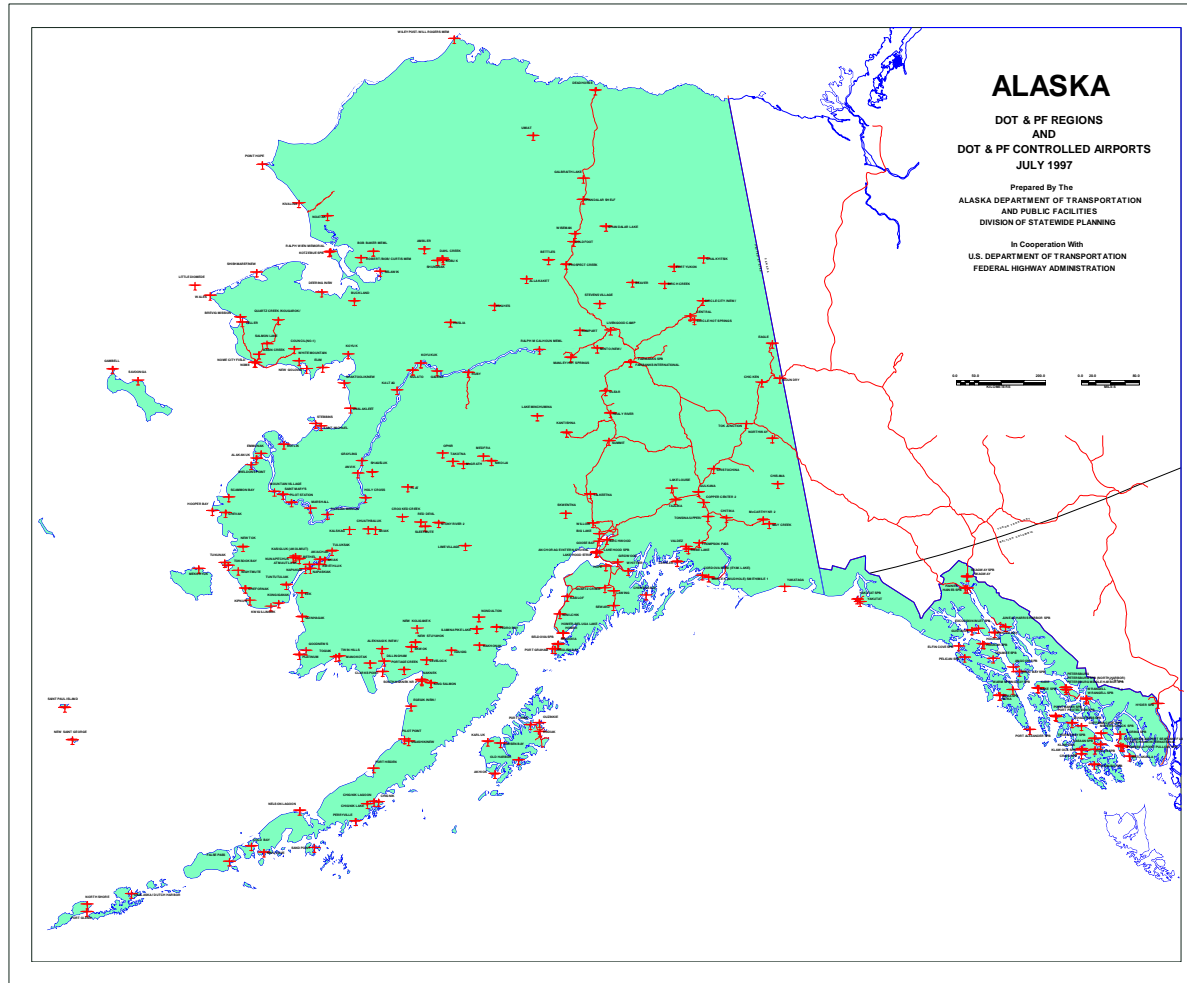


THE ARCTIC





NORTHERN TRANSPORTATION



Air Carriers

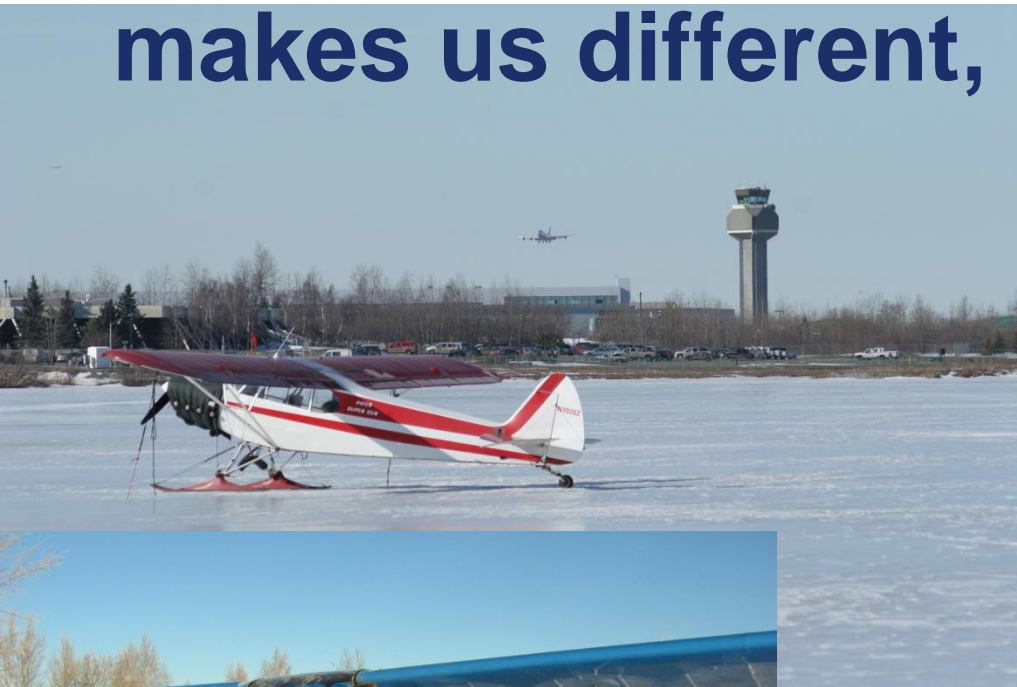
Alaska fleet=Part 135



Lower 48 fleet= Part 121



You have to EXPERIENCE what makes us different,



Alaska Aviation Uses



Robert Baron, Alaska

90 Day Window

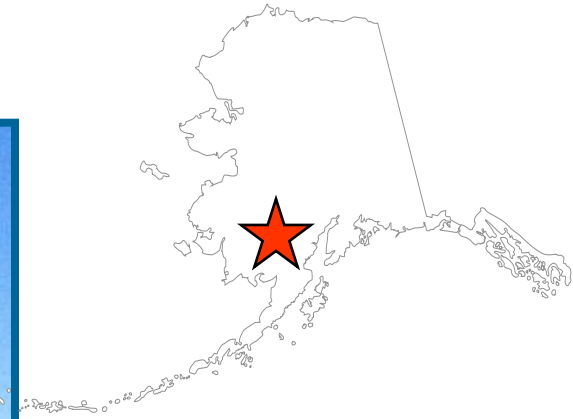


Winter Access



Flood - Sleetmute, Alaska

Navigating spring
floods.....



U.S. DEPARTMENT OF TRANSPORTATION

- **U.S. FEDERAL AVIATION ADMINISTRATION**
- **U.S. MARITIME ADMINISTRATION (MARAD)**



DRIVING FORCES FOR THE NORTH

- **ENVIRONMENT**
- **REMOTENESS**
- **LACK OF SURFACE INFRASTRUCTURE**
- **CHANGING ARCTIC**
- **SAFETY, SECURITY AND ACCESS**
- **ARCTIC POLICY**
 - NATIONAL SECURITY PREIDENTIAL DIRECTIVE/NSPD – 66
 - HOMELAND SECURITY PRESIDENTIAL DIRECTIVE/HSPD - 25



NSPD-66/HSPD-25: ARCTIC REGION POLICY

- **SECTION III “POLICY”, PART F, MARITIME TRANSPORTATION IN THE ARCTIC REGION STATES U.S. PRIORITIES FOR MARITIME TRANSPORTATION IN THE ARCTIC REGION ARE”:**
 - **TO FACILITATE SAFE, SECURE, AND RELIABLE NAVIGATION;**
 - **TO PROTECT MARITIME COMMERCE; AND**
 - **TO PROTECT THE ENVIRONMENT**



“Cornerstones”

- **Rural Access**

- **Provide and enhance safe access for rural Alaskan communities**
- **Sustainable Rural Communities**
- **Economic Impact**



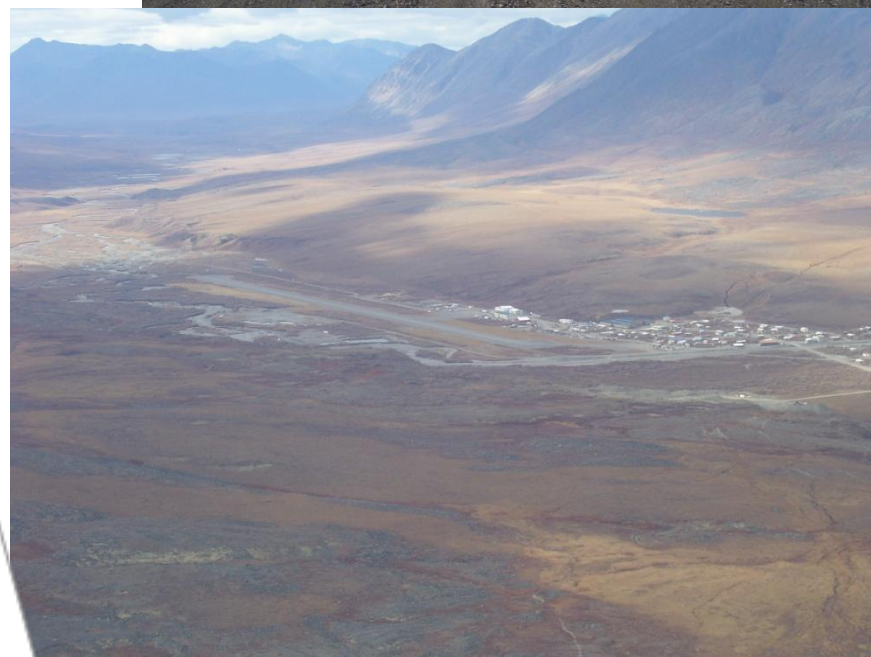
Alaska Aviation Airport System

- **High Construction Costs**
 - Remote Location / Barging
 - Weather
 - Materials





Remote Airports



Alaska Aviation Airport System

Rural Airports Provide the Only Year Round Access:

- Transportation of people & goods
- Food, mail, students, fuel, travel
- Emergencies (Medivac)



“If we didn’t have the airport we wouldn’t have anything. The airport is a fact of life for living out here in the villages. The airport is our roads, highway, ocean, our lifeline.”

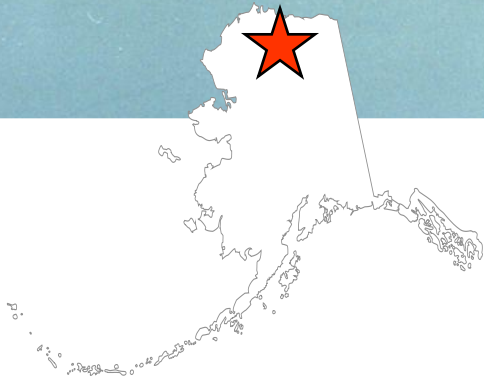
-Rural Alaska Resident

Wind - Cape Newenham, Alaska

Extreme winds destroyed a 60' radome and the ANICS facility



Mobilizing to Chandalar Lake, Alaska



AVIATION INFRASTRUCTURE AND FUNDING

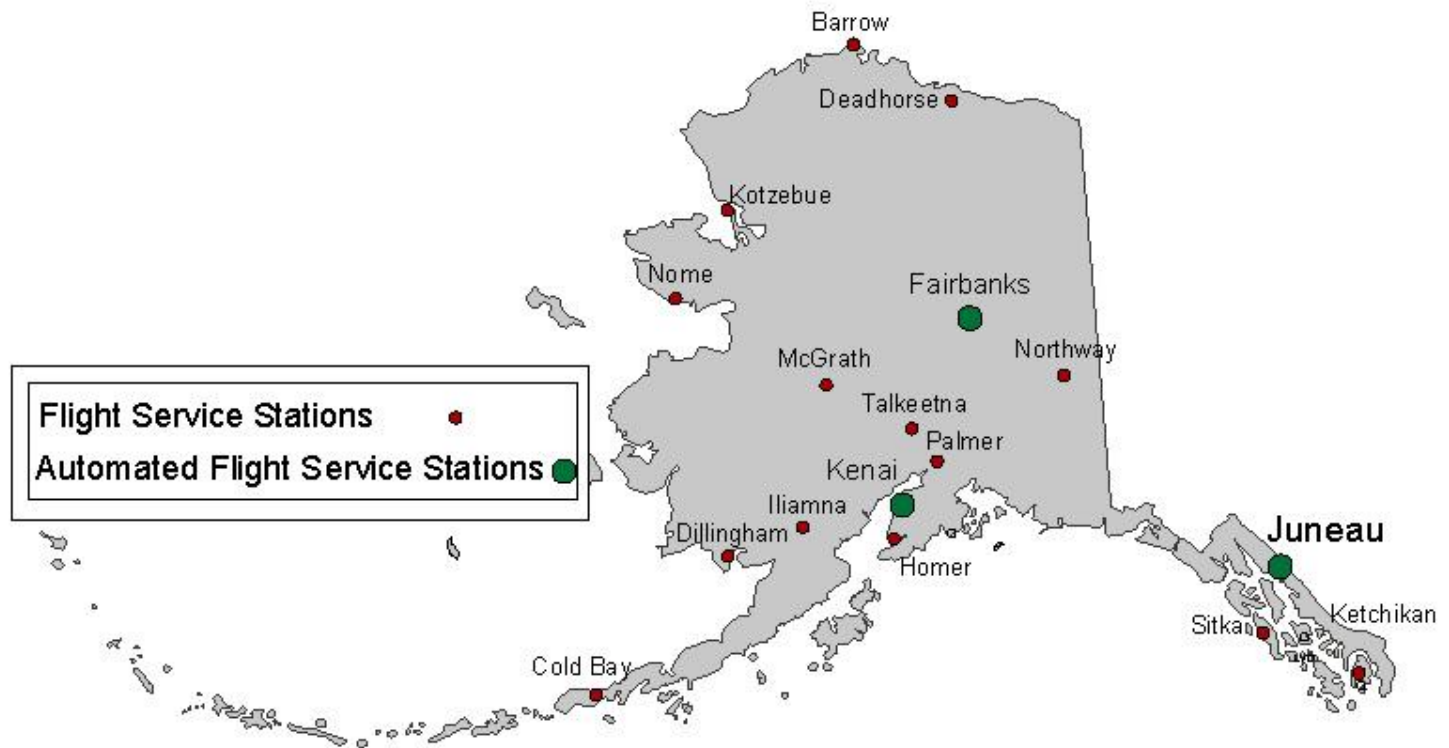
- **CHALLENGES**

- Discrepancy between the National Scoring System and Rural Alaska basic access needs (e.g. high costs v/s low population) – Alaska is more successful – based on safety case
- Needs are higher than available funding
- High construction costs v/s population



Flight Service supports General Aviation

Alaska Flight Services



Barge Landing, near Moses Point, AK



INTERNATIONAL GOVERNANCE

- **PARTICIPATION IN A VARIETY OF FORA, INTERNATIONAL ORGANIZATIONS AND BILATERAL CONTRACTS THAT PROMOTE U.S. INTERESTS IN THE ARCTIC:**
 - ARCTIC COUNCIL
 - INTERNATIONAL MARITIME ORGANIZATION (IMO)
 - Committee on Marine Transportation System (CMTS)
 - INTERNATIONAL CIVIL AVIATION ORGANIZATION (ICAO)



NEW 8-NATION ARCTIC SEARCH AND RESCUE AGREEMENT

- **Arctic Council**
- **Canada, Denmark, Finland, Iceland, Norway, Russia, Sweden, United States**
- **Maritime and Aeronautical**



INTERNATIONAL COOPERATION



U.S. and Canadian Coast Guard in the Arctic



ARCTIC MARITIME AND AVIATION TRANSPORTATION INFRASTRUCTURE INITIATIVE

- **Provide a comprehensive analysis of port and airport infrastructure in the Arctic**
- **Baseline, Needs Assessment and Gap analysis**



SURFACE

Tuntutuliak Board Walk



SURFACE

- **ISTEA – 1991 through 1997**
 - “Transportation has been vital to America’s economic prosperity and quality of life since the Nation’s Founding”
 - “If we are to remain competitive in the global marketplace and maintain our quality of life, we must aggressively meet at least four national challenges: (1) safety, (2) continued growth of traffic and travel and its attendant congestion, (3) environmental concerns, and (4) demographic changes
- **NEXTEA AND BEYOND**



Barrow Alaska, Polar Bear Deviation



•QUESTIONS?