



Moving Forward Together

The Calgary Regional Partnership



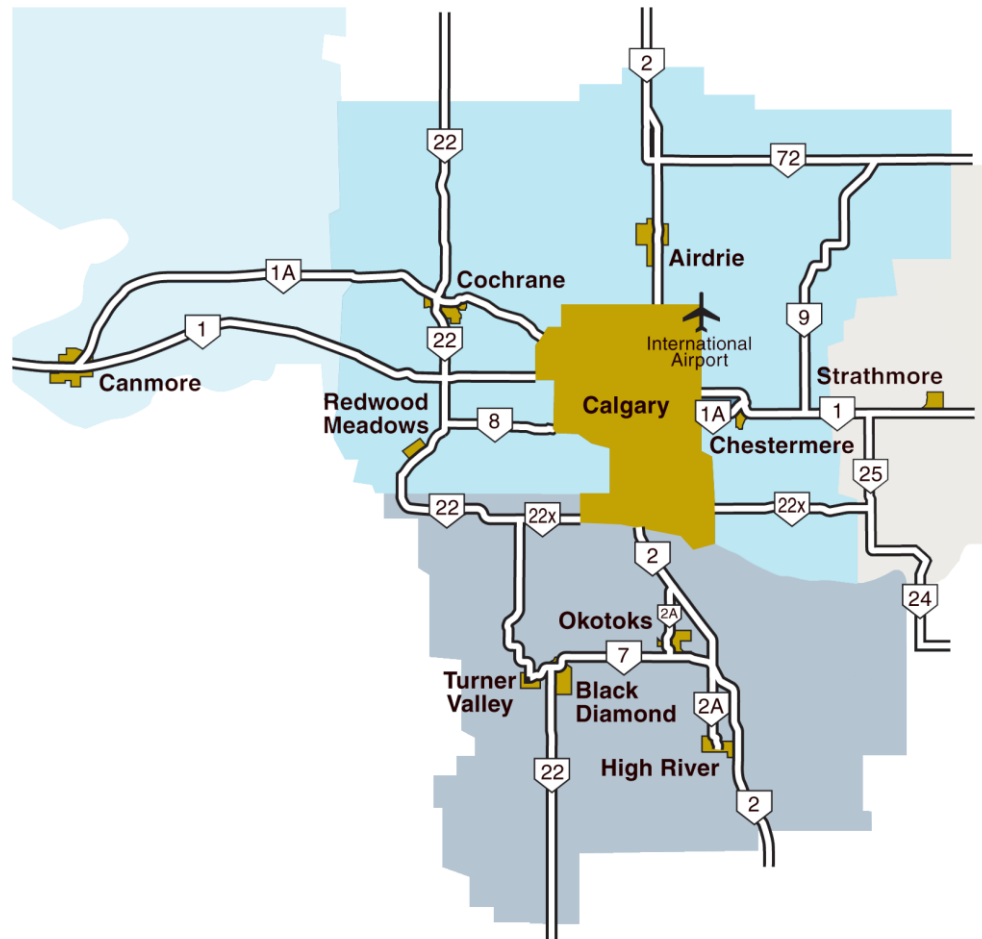


Moving Forward Together

The Calgary Regional Partnership



Calgary Regional Partnership



Where We've Been and Where We Are Now

Moving Forward Together is nothing new for the Calgary Region, we are proud of our entrepreneurial spirit of getting things done.

1999

1999 – 2005 the CRP begins as a loose network of municipalities based on a model of co-operation and consensus

2005 CRP recognizes the need to work toward regional sustainability and approves the Melbourne Principles for Sustainable Cities

CHANGE BEGINS: the Region takes leadership 2006

- By June 2009 **Calgary Metropolitan Plan is approved** by the CRP General Assembly including a CRP Governance Model and Phase 2 of the Regional Servicing Study and in,
- November 2009 the Calgary Regional Transit Plan is approved by the CRP General Assembly

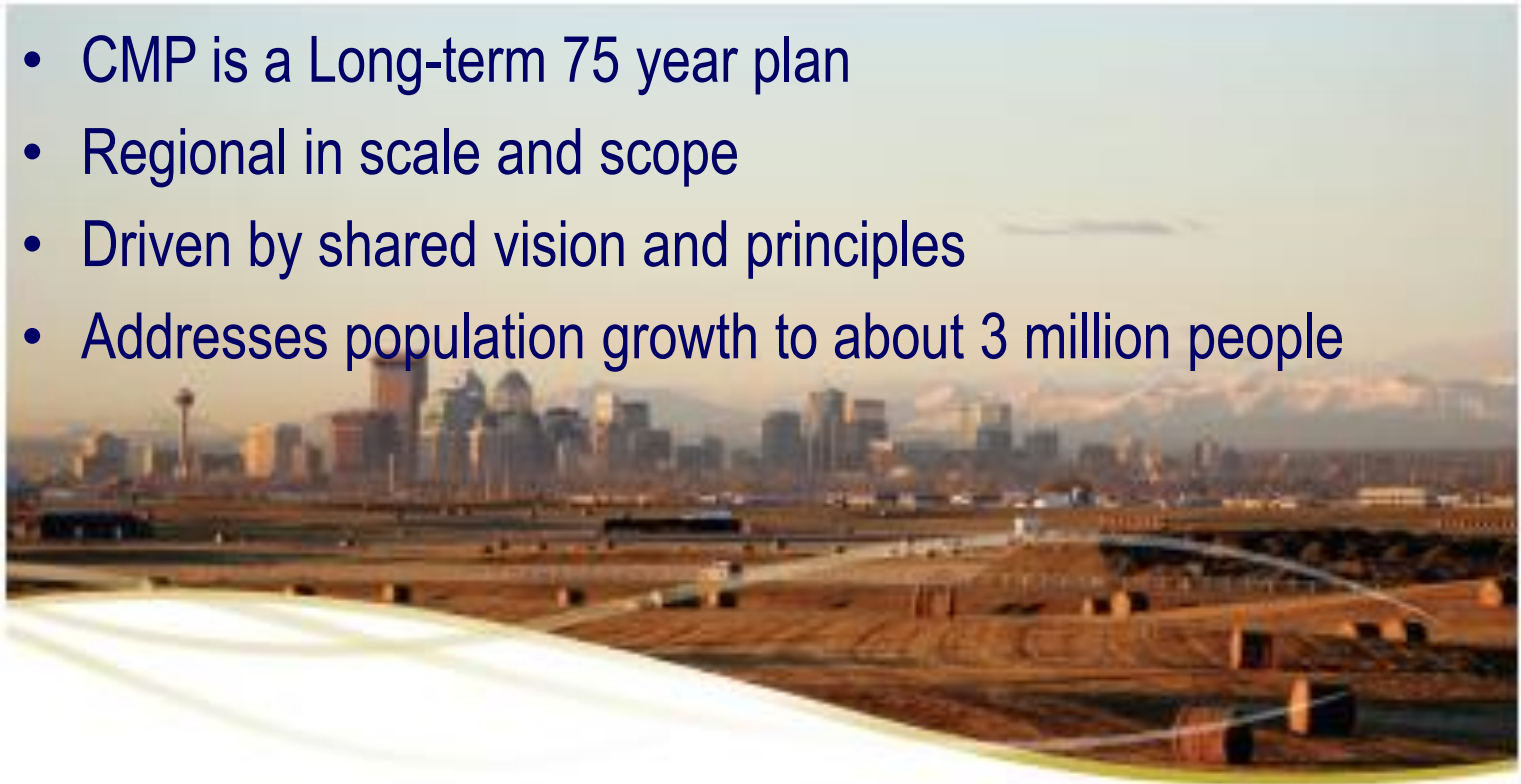
Moving Forward Together: the Region continues to take Leadership

- October 2009 CRP Executive approve preliminary implementation priorities
- **On June 2010 the CRP General Assembly will approve the CRP implementation plan - Moving Forward Together: 2010 - 2011 CRP Strategic Action Plan and Budget**

2010

What is the CMP?

- CMP is a Long-term 75 year plan
- Regional in scale and scope
- Driven by shared vision and principles
- Addresses population growth to about 3 million people



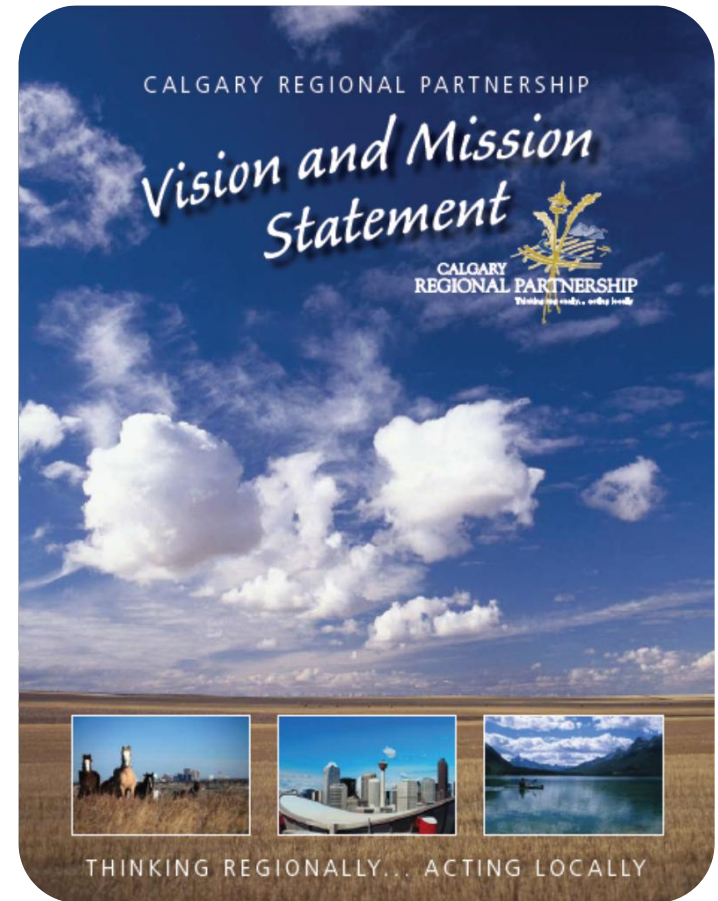
Calgary Metropolitan Plan



REGIONAL PARTNERSHIP
Thinking regionally... acting locally

Driven by a clear, guiding vision

- Working together
- Balance
- Healthy environment
- Enriched communities
- Sustainable infrastructure
- Prosperous economy



What is the CMP?

The CMP is based on four foundational Principles

- Protecting the natural environment and watershed
- Guiding compact growth for complete communities
- Providing systems of regional infrastructure
- Enabling regional level decision making



2008: A New Regional Mandate

Provincial Land Use Framework



South Saskatchewan Regional Plan
Calgary Metropolitan Plan

2008: A New Regional Mandate

Provincial Land Use Framework

Calgary Metropolitan Plan Requires:



- a vision of the region's development...
- a regional perspective...
for infrastructure - water and sewer systems, roads and transit;
- complementary policies between municipalities...
- support for higher-density infill development...
- identification of future growth areas...

Calgary Metropolitan Plan delivers ...



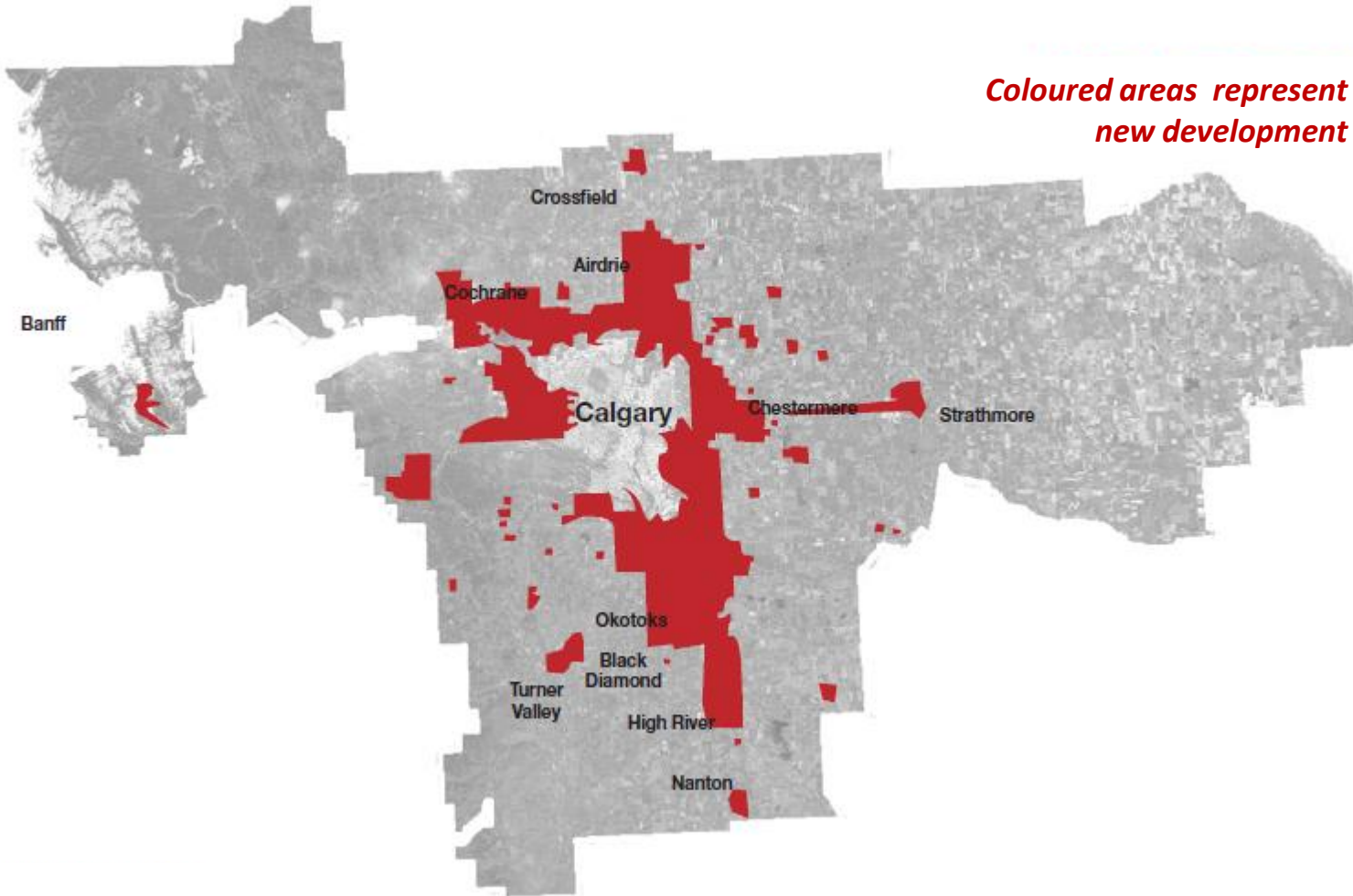
- **Addresses Regional Scale Issues**
- **Protects** the natural systems (*Defensive strategy*).
- **Guides growth** where it should more efficiently go and should not go (*Offensive strategy*). 60- 70 years
- **Integrates efficient infrastructure** (regional transit, water, economic development, waste, GIS).
- **Implements and Governs**

Calgary Metropolitan Plan delivers ...



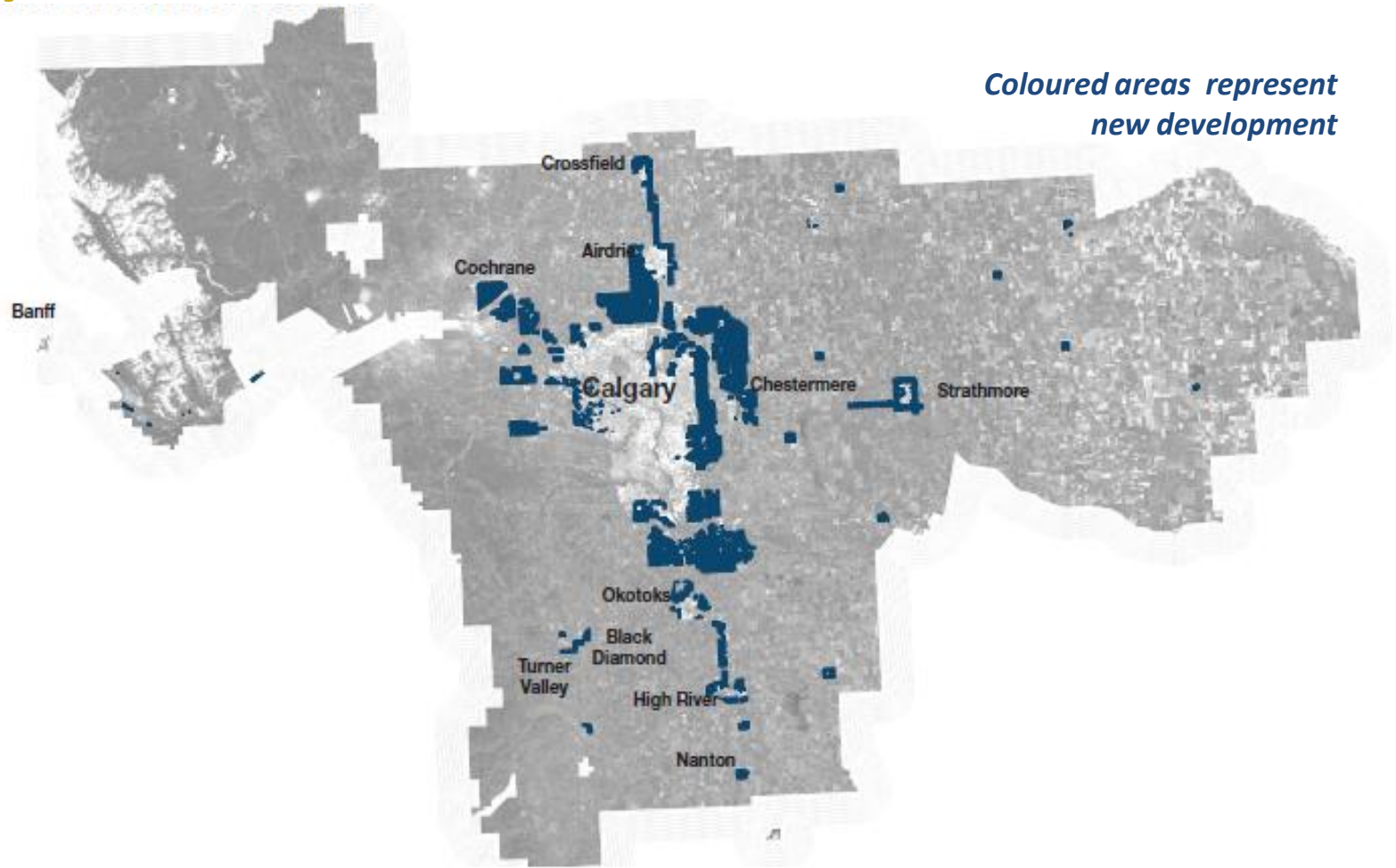
- 64% reduction from “*more of the same*” development footprint
- over 30% efficiency increase in infrastructure cost

Trend Scenario



*Coloured areas represent
new development*

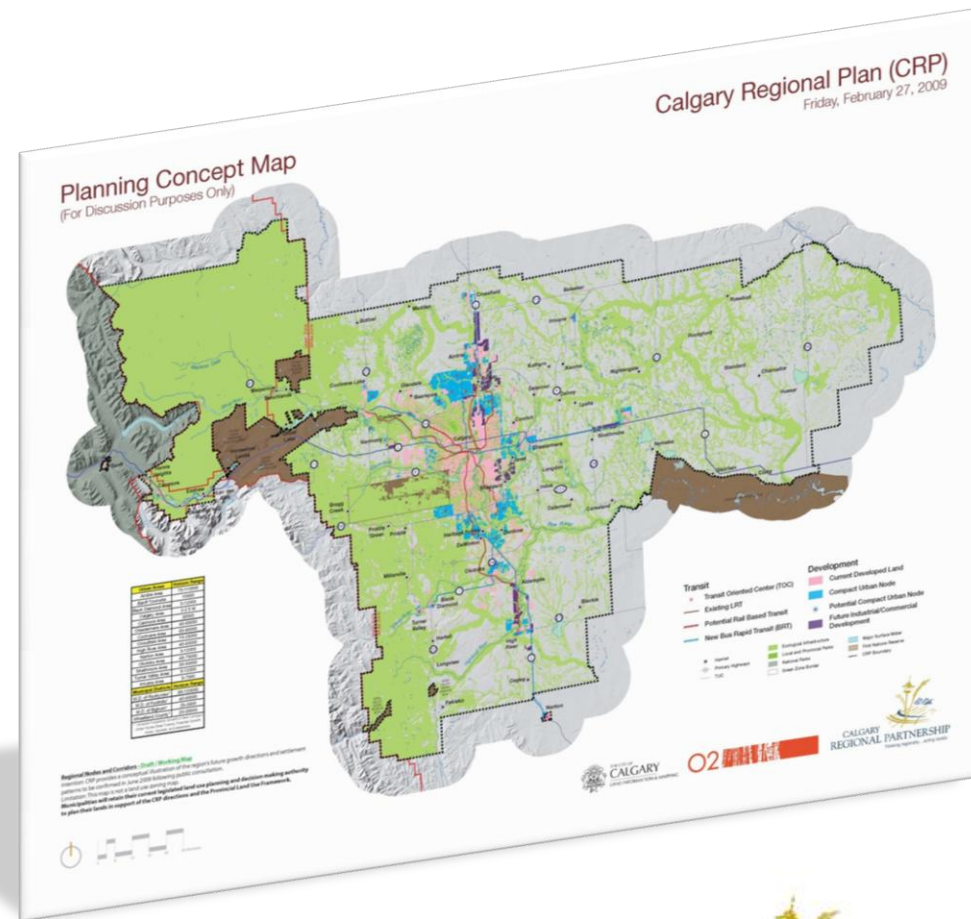
Hybrid Scenario



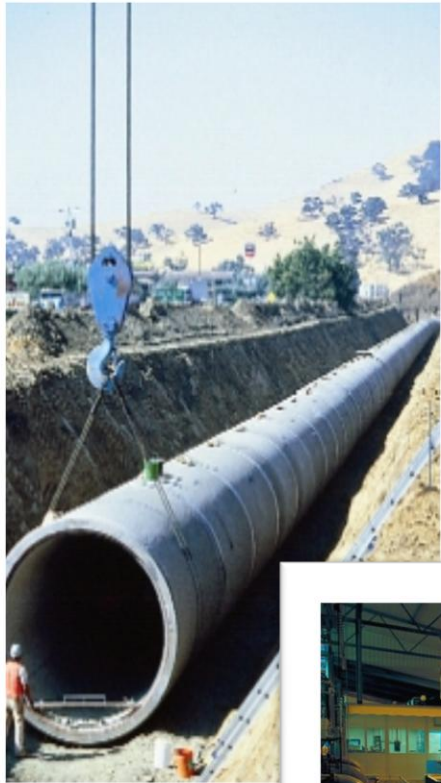
*Coloured areas represent
new development*

Compact Settlement Pattern

- **Compact Urban Nodes**
 - *Compact*
 - *Complete &*
 - *Connected communities*
- Building on existing cities, towns first
- Integrate land use & density with water, sewer and transit servicing



The Plan Integrates Cost Effective Infrastructure

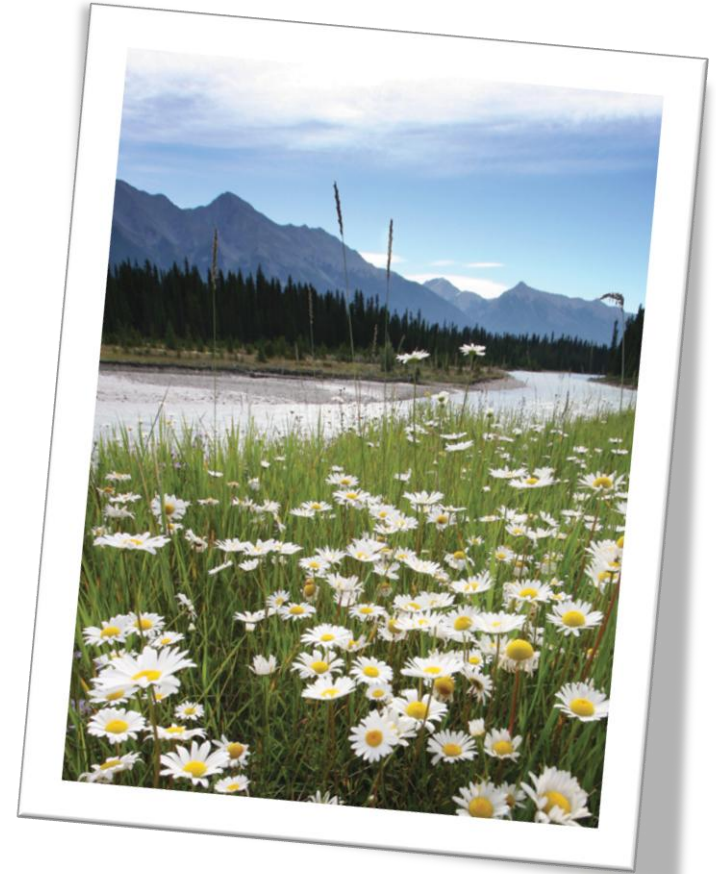


- Regional water and wastewater
- Regional transit systems
- Regional waste management
- Regional economic development



Sustainable Regional Water System

1. New **infrastructure** (treatment plants, water lines).
2. Water **conservation** and watershed **protection**
3. Water **shared** for compact urban settlement patterns



Regional Transit System



- Approved CRP Transit Plan (2009)
- Increases timely and reliable travel options for residents
- Used as a catalyst for directing and shaping sustainable land use and employment/population growth
- Benefits of the Transit Plan to CMP:
 - ✓ Supports employment mobility
 - ✓ Intensification of land uses
 - ✓ Lessens growing congestion
 - ✓ Enhances local connectivity
 - ✓ Accessible for all users
 - ✓ Reduction of greenhouse gases

Regional Transit System

Short-Term Priorities:



- ✓ Two-way Express service and local transit service (Airdrie, Cochrane, Chestermere, Strathmore, Okotoks and High River)
- ✓ Transit maintenance facilities
- ✓ Land purchase for Transit Oriented Development (TOD) hubs
- ✓ Formalize transit governance arrangements
- ✓ Work with private bus operators to deliver services

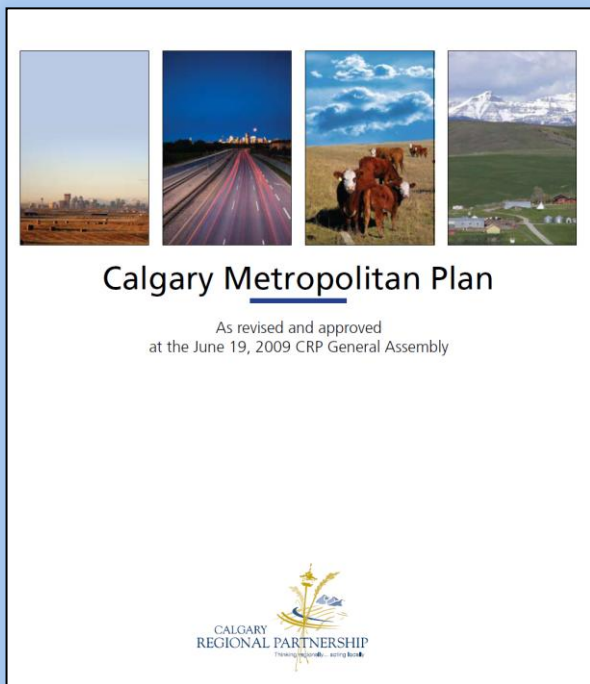
Regional Transit System

Medium–Long Term:

- ✓ South and west – Commuter Rail Lines
- ✓ North – LRT extension
- ✓ East – LRT to Chestermere with BRT connection to Strathmore
- ✓ New regional transit express routes
- ✓ Develop TOD areas
- ✓ Regional transit Agency



Implementing the Plan . . . moving forward . . .



Who Implements the Plan?

Local Municipalities

- *Retain land use planning decision making authority*
- Local Municipal Development Plans to be aligned with CMP within **three years** of Provincial approval of CMP

The Calgary Regional Partnership


- Implements regional water, waste and transit systems
- Determines future urban growth areas / settlement patterns
- Ensures MDP Alignment and CMP to SSRP
- Updates and amends CMP / Monitoring & reporting
- **All regional decisions may be appealed to third party**

The Province

- Provides enabling legislation / CMP Regulations
- Provincial Land Use Framework (*South Saskatchewan Plan*)

CMP Benefits to the Province

- Implements provincial strategies and policies
- Provides a coordinated regional perspective for provincial capital funding
- Represents a collaborative approach toward regional growth management and servicing solutions
- More efficient use of land and resources
- Increases the economic competitiveness of the region and the Province of Alberta



The CMP Delivers an estimated \$400 million dollars in water and sewer infrastructure capital cost savings over the life of the plan through a better coordinated regional approach, a more compact urban footprint and a commitment to water conservation

CMP Benefits to the Province

- Provides greater certainty of infrastructure servicing (i.e. type, timing, locations, infrastructure funding expectations, conditions associated with gaining access to regional infrastructure)
- Improves mobility capacity and choices for goods movement, employees, customers, tourists and residents of region, especially between regional communities and destinations



- Attracts and supports business growth and investment, consistent with the region's strategies and supportive of local economic diversification efforts

CMP Benefits to the Calgary Region

- Protects the region's environmental assets and watershed
- Directs new development to areas supported by infrastructure
- Significantly reduces infrastructure costs
- Increases the economic competitiveness of the region through effective land use strategies, enhanced infrastructure provision and improved regional transit mobility options



CMP Benefits to Local Municipalities and Residents

“For Cochrane, the CMP represents tax dollar savings to our ratepayers. The provision of transit, regional servicing, and a clear vision for economic development reassures the people of Cochrane that all efforts are being taken today to keep taxes low for tomorrow.”

- **Truper McBride**
Mayor, Town of Cochrane,
Vice Chair of CRP



Increases cooperation between neighbours, reduces the need to duplicate services for our residents, generating tangible financial savings

Challenges ...

- Consensus can be hard to find and maintain
- Short term, local concerns can trump long term solutions
- Co-operative systems are vulnerable to internal dissent
- Addressing regional issues is complex and takes time
- Difficult to explain and communicate the regional system
- Vulnerable to council member turn over



Lessons Learned ...

- Planning for our collective future is a “political act”
- Identify compelling issues and start from there ...
- Build a strong vision and stick to it
- Challenge the story of “municipal autonomy”
- Take risks and challenge the status quo
- Commit to working together ...





Moving Forward Together

The Calgary Regional Partnership

