

Saskatchewan Highways and Transportation

Advantage NORTH

Whitehorse May 29, 2007



Roads to Prosperity
Saskatchewan's Northern Economic
Infrastructure Strategy

Northern Region Overview



Roads to Prosperity
Saskatchewan's Northern Economic
Infrastructure Strategy

Transportation Network

- Highway network maintained in the Northern Region:

Surfaced Roads 4100 km

Gravel 5,013 km

Winter Roads 387 km

9,500 km

18 Airports

4 Ferries



Key Economic Activities

- Mining
 - Uranium
 - Base Metals
 - Diamonds
- Forestry
- Tourism



Northern Economic Infrastructure Strategy

- The initiative was announced by the Province in November 2005. The strategy included an initiative to invest \$65.5 million in northern road transportation infrastructure.



Northern Economic Infrastructure Strategy

Four key pillars:

- Building a legacy in the north through capacity building.
- Recognition of a strategic northern road system.
- Ensuring that northern and isolated communities are assured reasonable access to transportation.
- Innovative financing model that facilitates partnerships and engages northerners.

Northern Economic Infrastructure Strategy

- Projects will focus on:
 - Community Access Roads
 - Economic Corridors
 - All Weather Roads in the Athabasca Basin

COMMUNITY ACCESS

- Targeted improvements to 6 community access roads
- Typically constructed to low standard in the 60's and 70's they no longer serve the communities needs.
- Improvements are determined through consultation with local residents.

ECONOMIC CORRIDORS

East Side

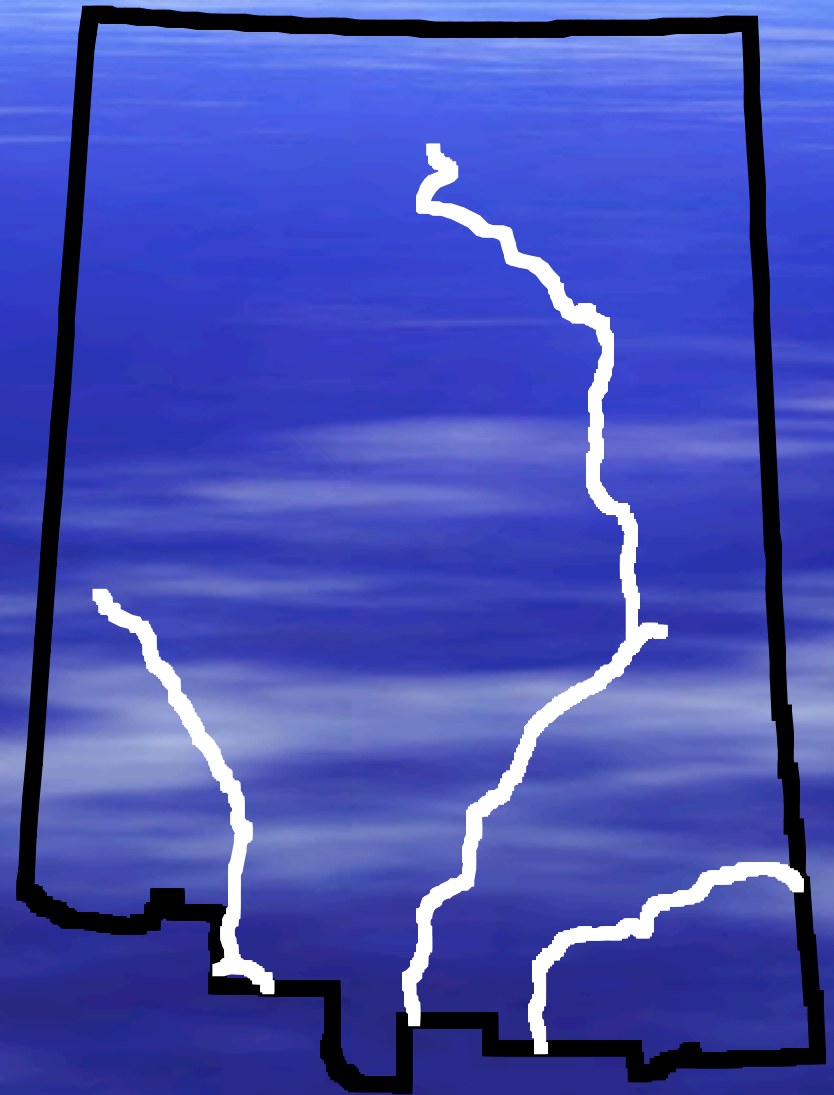
- Smeaton to Creighton
- Highway 120

Center

- Hwys 102/905
- Athabasca Basin Roads

West Side

- Jct. Hwy 965 to La Loche



Economic Corridors

GARSON LAKE ROAD

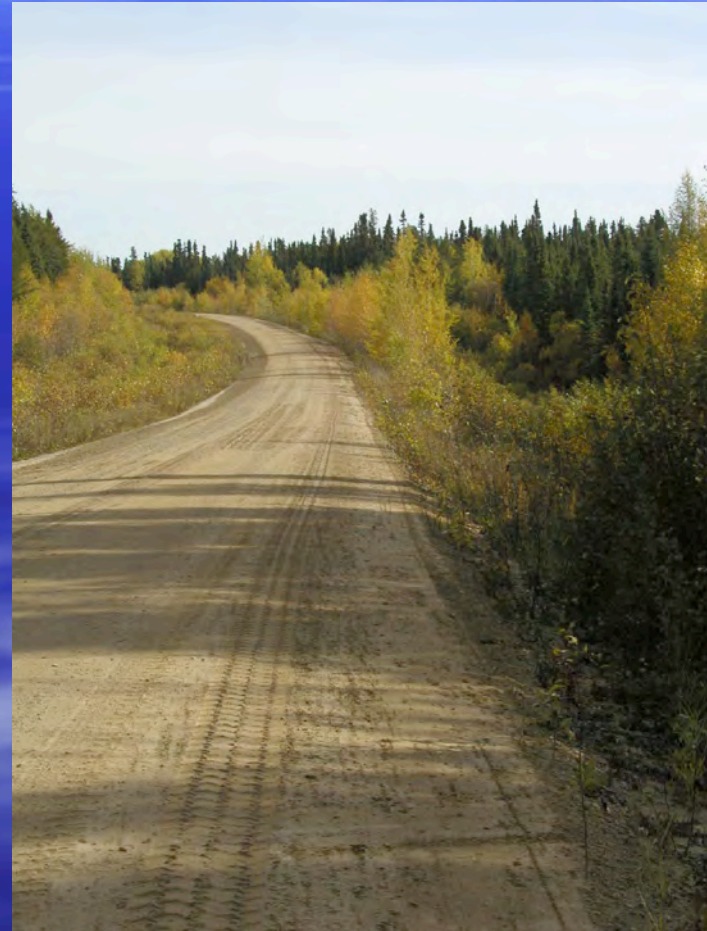
- **Completion of an all weather gravel road to the Alberta Border**
 - Provides access to the booming economy of North Eastern Alberta



ATHABASCA BASIN

All weather gravel
access roads to:

- Wollaston Lake
- Stony Rapids /
Black Lake
- Fond du Lac



NEIS Opportunities

- Saskatchewan has allocated 50% of the funds to complete the roads in the Athabasca Region
- Alberta – partnership to complete the La Loche – Fort McMurray Link
- Federal Government - invited to participate in the completion of the Athabasca Basin and Garson Lake roads.
- Industry – Ongoing discussions to discuss financial participation and road improvements

Questions

