

EST.  2001

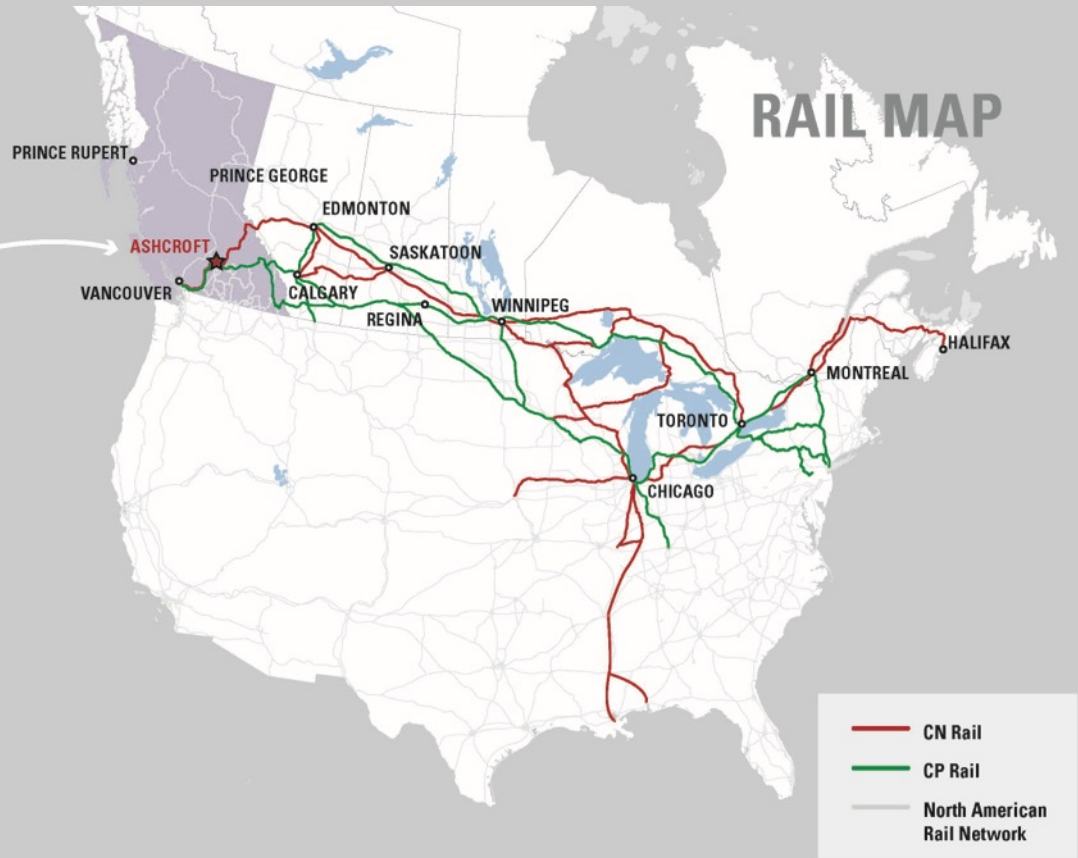
# ASHCROFT TERMINAL

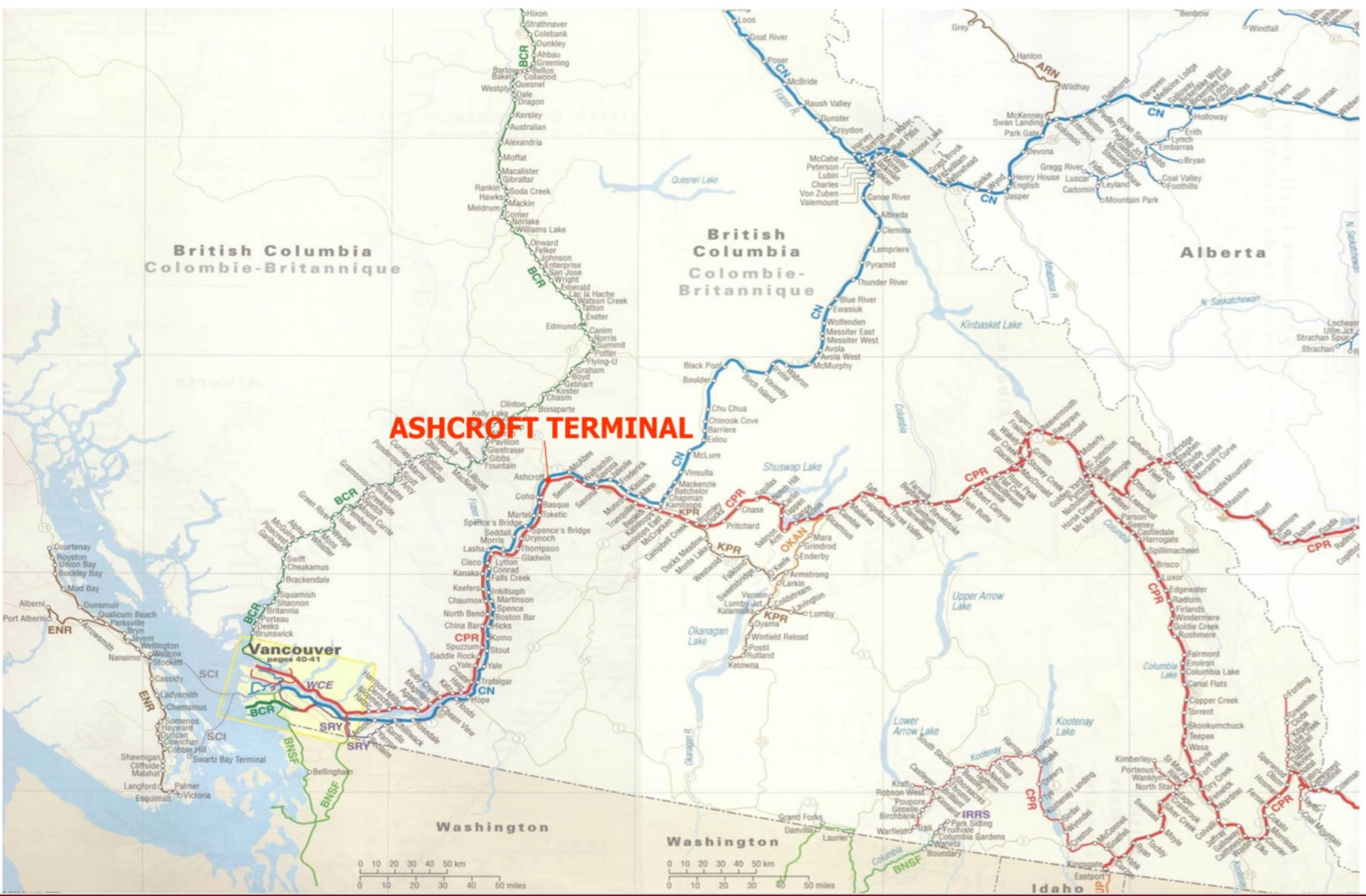
CANADIAN INLAND PORTS CONFERENCE

September 20, 2016

# What is Ashcroft Terminal?

- Inland transload terminal
- CPR/CNR mainlines onsite
- 32,000 ft. of internal track
- 320 acres industrial zoned





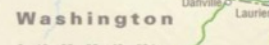
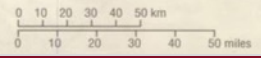
# ASHCROFT TERMINAL

British Columbia  
Colombie-Britannique

British Columbia  
Colombie-Britannique

Alberta

Vancouver  
pages 40-41



September  
2016





# Ashcroft Terminal Current



September  
2016









TILX 600363  
CAPY 18050 US GAL  
CAPY 15030 IMP GAL  
CAPY 68 327 L



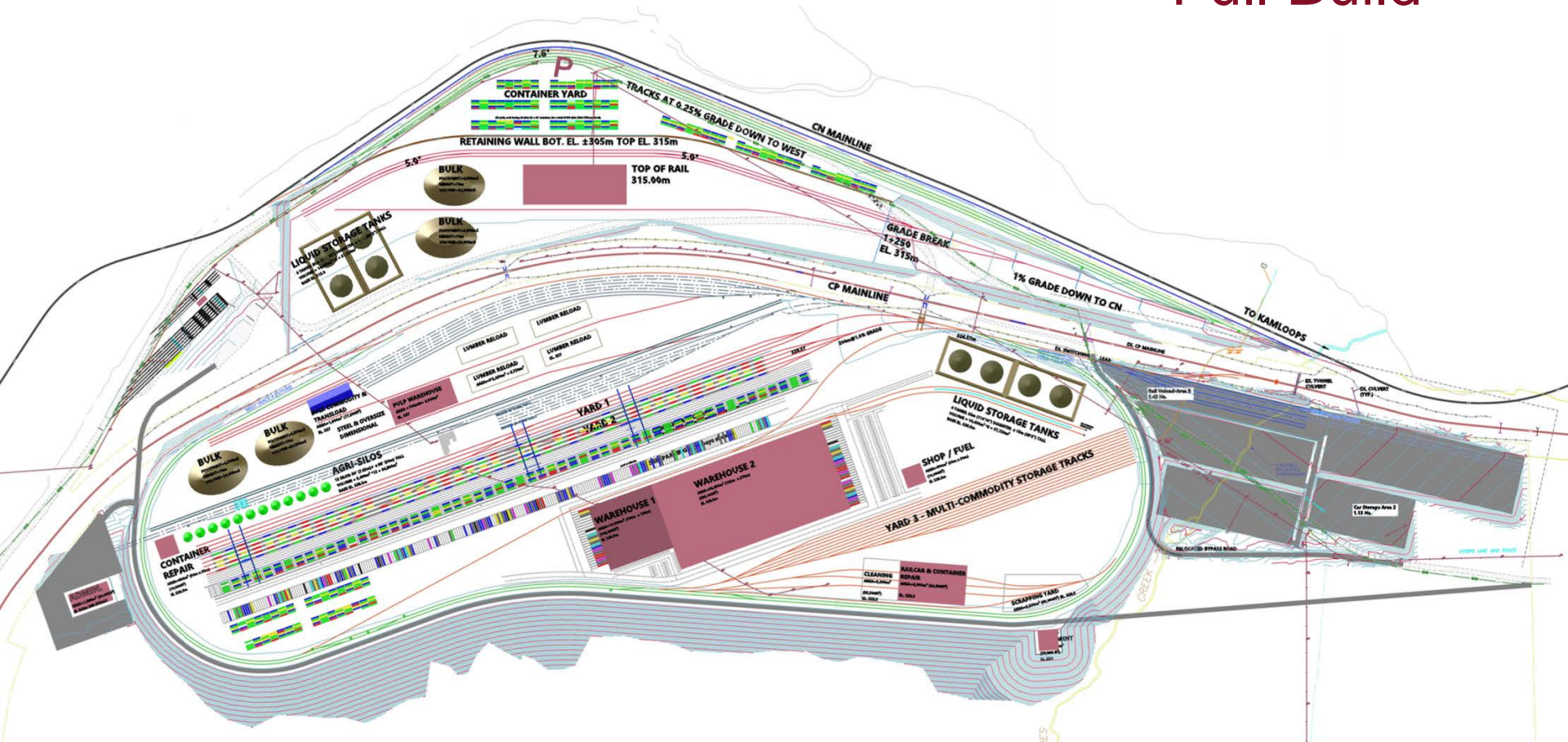


EST. 2001

**ASHCROFT**  
TERMINAL



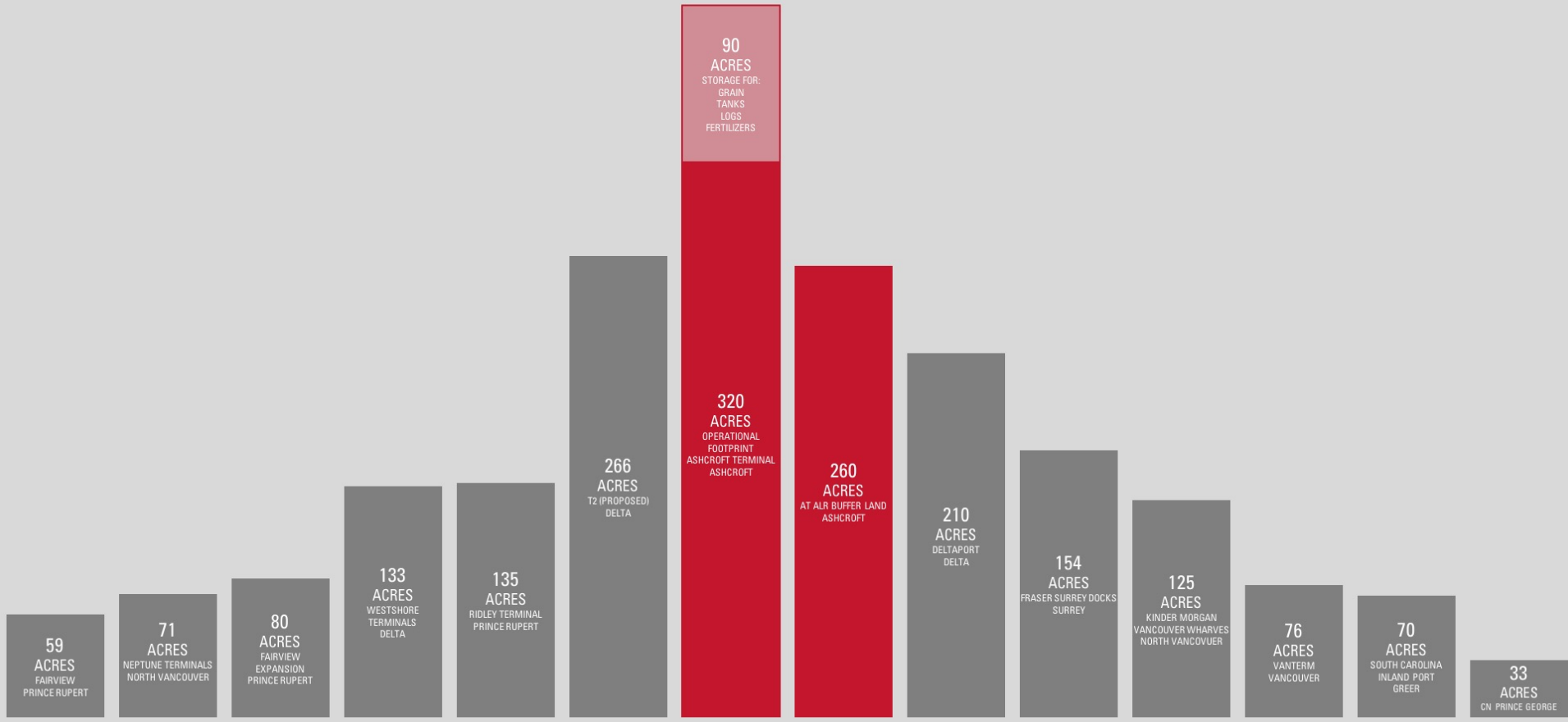
# Full Build







# COMPARATIVE TERMINAL SIZE



September  
2016





