



CentrePort Canada

NORTH AMERICA'S LARGEST INLAND PORT

Diane Gray

President and CEO

September 20, 2016



At the Hub of Key Gateways

Winnipeg is connected to important global markets:

- **NAFTA Gateway**
 - Mid-Continent Corridor
 - Eastern USA Seaboard
 - Mexico
- **Asia Pacific Gateway**
 - Ports of Vancouver, Delta and Prince Rupert
- **Great Lakes/ St. Lawrence Seaway**
 - Thunder Bay
- **Quebec-Ontario Gateway**
 - Trans Canada Corridor
 - Windsor/Detroit
- **Atlantic Gateway**
 - Halifax and Montreal Ports
- **Arctic Gateway**
 - Air Polar Routes
 - Marine Polar Routes





North America's Largest Inland Port

- 20,000 acres with on-site access to **tri-modal** transportation.
- Centrally located.
- CentrePort Canada Inc. is creating an integrated logistics and infrastructure platform to attract business investment.



Q: What is an inland port?

A: Inland ports provide quality industrial land connected to multi-modal transportation and an ease of doing business to help companies efficiently manage their supply chains and connect them to markets around the world.



“(Winnipeg) It’s so central. It’s fantastic for the distribution hubs, plus it’s on the rail lines. There are also lots of truckers available. It’s so easy.”

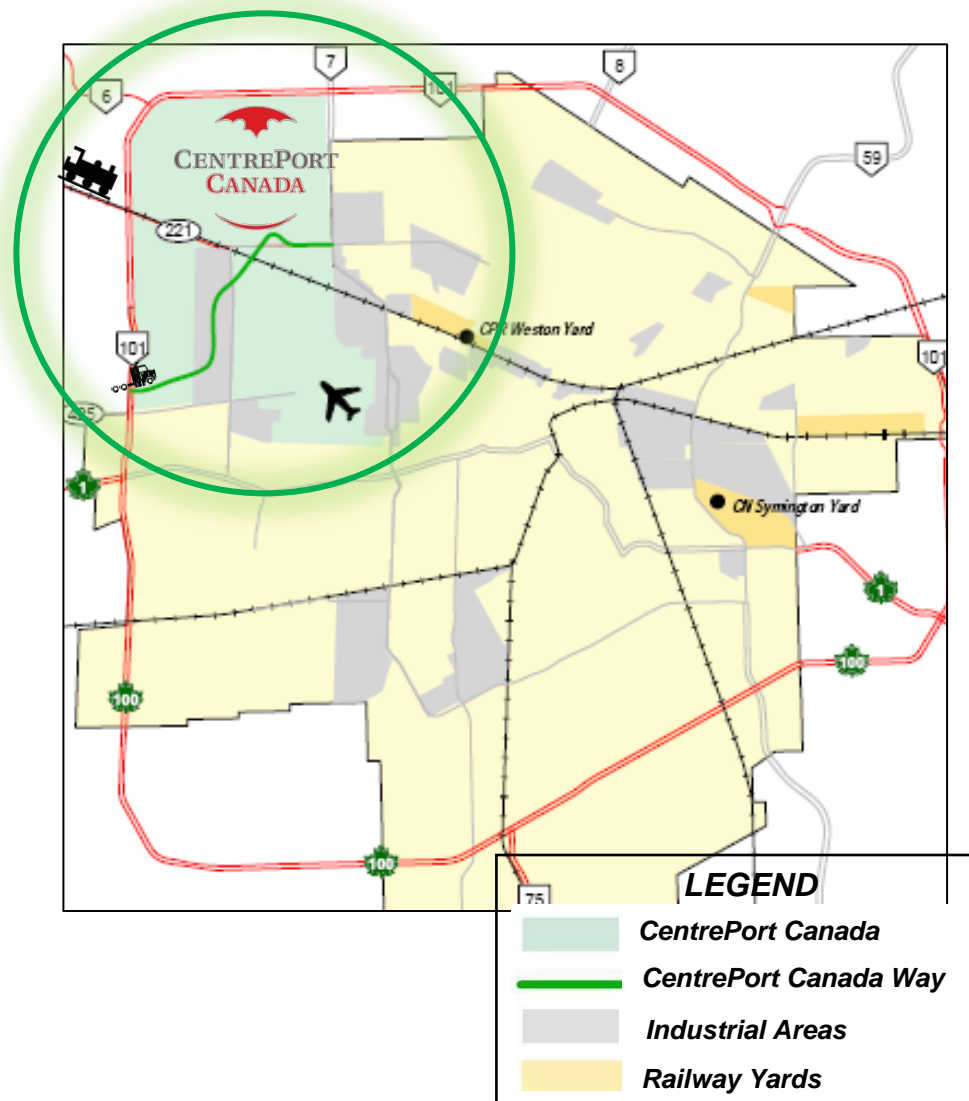
- Manjit Minhas, *Dragons’ Den*, Entrepreneur



Mandate

- CentrePort Canada Inc.'s legislative mandate is to:
 - Facilitate long-term development and operation of the inland port;
 - Facilitate and encourage investment in the inland port;
 - Promote the inland port by marketing it domestically and internationally.

CentrePort's Location



- Anchored by the James Armstrong International Airport.
- Located in Winnipeg (CentrePort South) and the RM of Rosser (CentrePort North).
- Key sectors: agri-business and food processing; composites and advanced manufacturing; biomedical and e-commerce; and regional distribution.

Live, Work, Play, Learn



Canada's Centre for Global Trade
WINNIPEG, MANITOBA

**8,000-10,000
PEOPLE:
LIVING IN
RESIDENTIAL
DEVELOPMENT**



**GREEN SPACE
& ACTIVE
LIVING
OPPORTUNITIES**



**POST-
SECONDARY
INSTITUTE
PARTNERSHIPS;
LOCATED
ON-SITE**



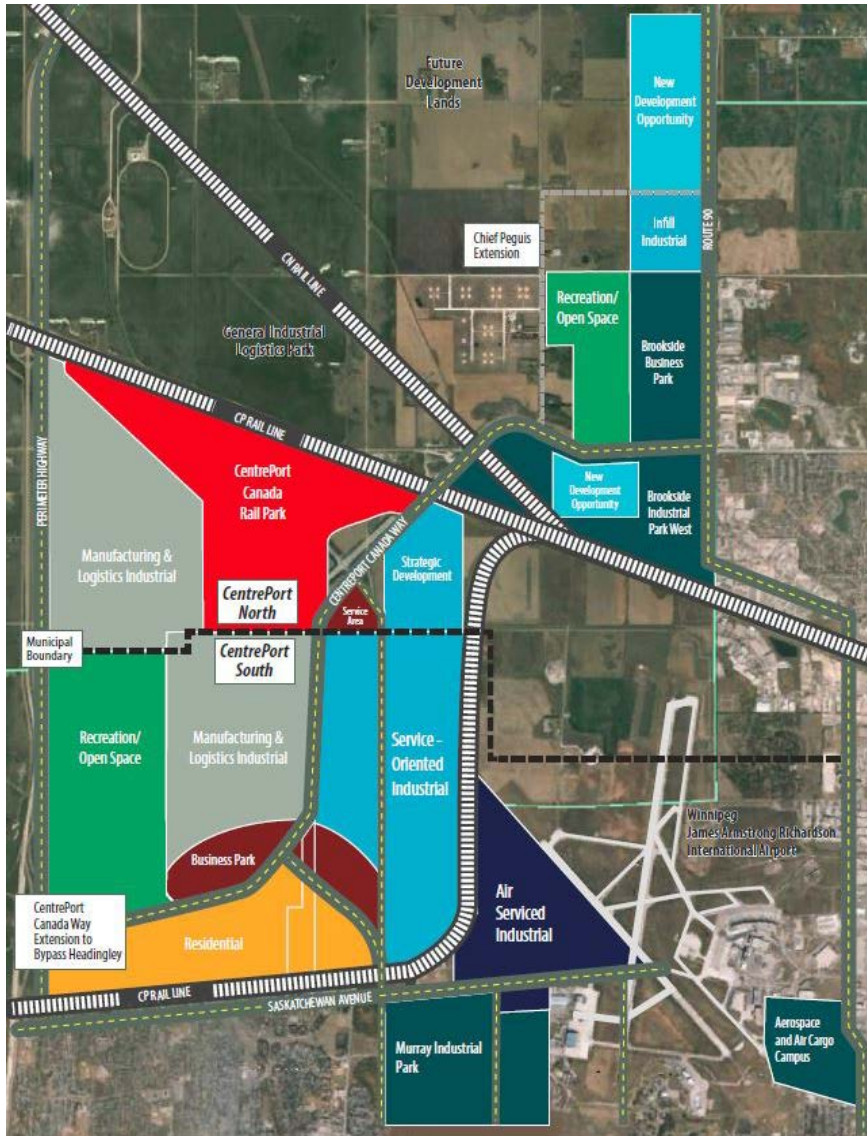
**HUNDREDS
OF NEW JOBS
ALREADY
CREATED**



Development @ CentrePort

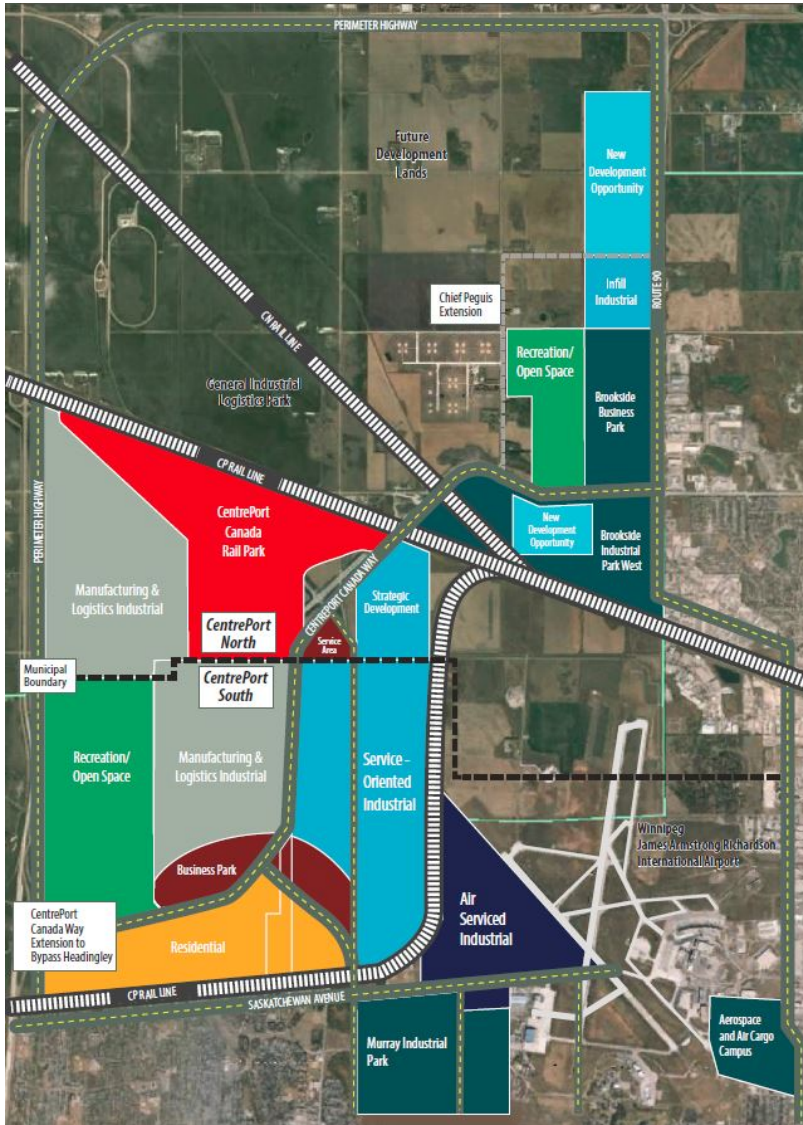


Canada's Centre for Global Trade
WINNIPEG, MANITOBA



Phased-in, master-planned development of the 20,000 acre tri-modal inland port

Coming to Market



More than 1,200 acres of prime industrial land are coming to market:

- **Rail served** (700 acre CentrePort Canada Rail Park).
- **Truck served** (500+ acres, multiple business parks).
- **Air served** (300 acres on the west side of the airport campus).

In addition, A new 600 acre **residential** community is also in the planning stages.

Tri-Modal Inland Port



Canada's Centre for Global Trade
WINNIPEG, MANITOBA



3 CLASS I RAIL CARRIERS (CP, CN & BNSF)

- Only major Canadian city on the prairies served by 3 continental class I railways: CN, CP, BNSF.
- Construction beginning on a common-use rail facility and industrial park. Will allow rail intensive businesses to access 3 class I carriers from a single location, through interchange.



INTERNATIONAL TRUCKING HUB

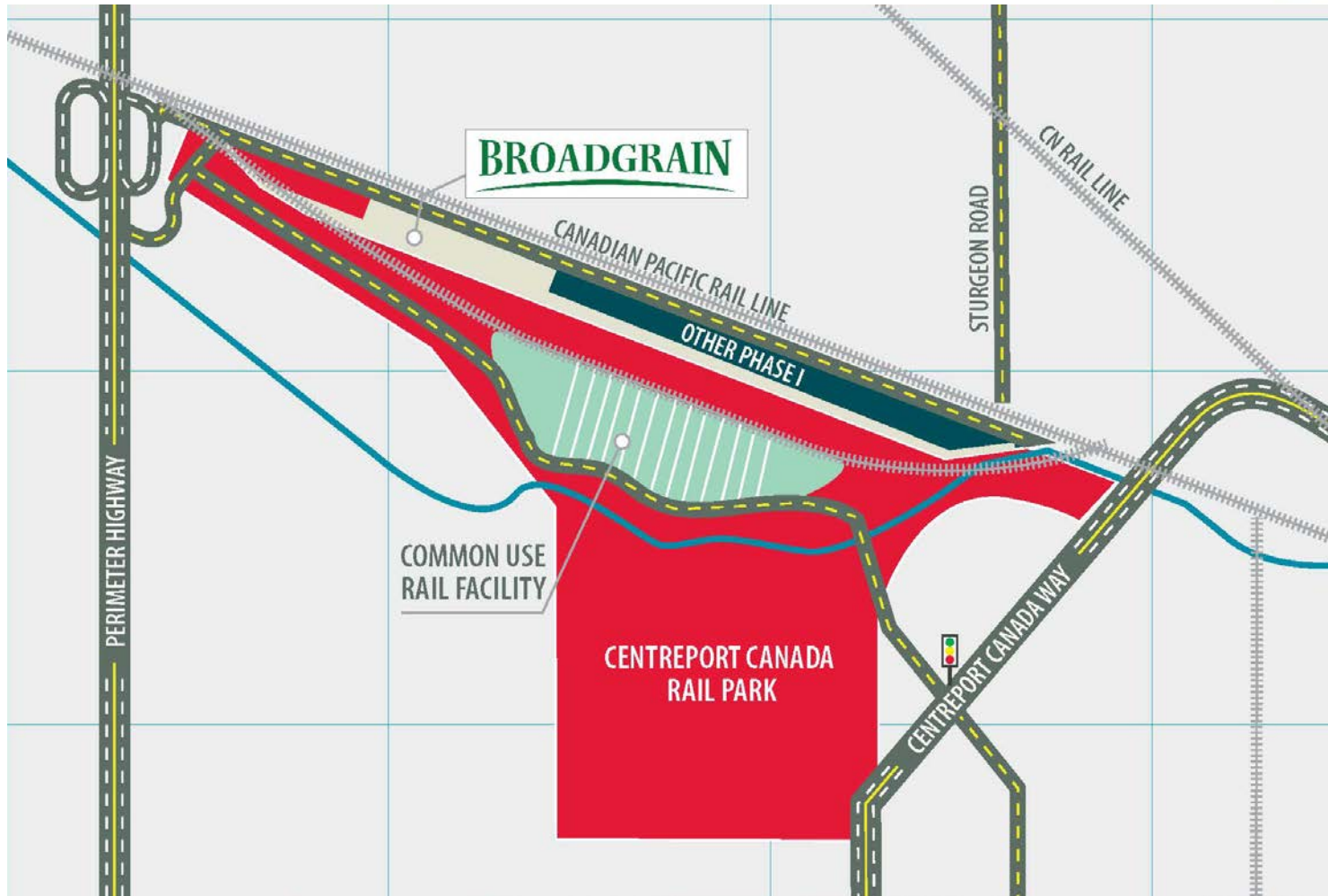
- Major trucking centre with 1,000+ for-hire trucking companies, only 1 hour from the Canada-U.S. border.
- CentrePort Canada Way expressway allows for 5 minutes to 90 km/h.
- ~\$1 billion in supporting highway infrastructure recently announced.



24/7 WORLDWIDE CARGO OPERATIONS

- 24/7 international airport #1 in Canada for dedicated freighter aircraft movements.
- 9 p.m. cut off for overnight parcel delivery to major Canadian cities.

CentrePort Canada Rail Park



Latest Updates


BroadGrain
Commodities is
anchor tenant in
Rail Park.

Special planning
authority in place for
CentrePort North
lands to fast-track
approvals.



Global exporter
Imperial Seeds latest
tenant on 20 acres.

46 new companies
on
290 acres of land.



“We are excited about the opportunity to continue to grow our **global business** and this property at **CentrePort** provided what we are looking for - access to the workforce, ease of transportation and a central location.”

-Glen Henderson, Vice President & General Manager, ISCO Industries

New Companies on Site



Canada's Centre for Global Trade
WINNIPEG, MANITOBA

BROADGRAIN

FedEx
Freight

ISCO
INDUSTRIES

SMS
EQUIPMENT

TS TRANSOLUTIONS
LEASING - RENTALS

arctic
beverages
pepsi fritoLay

Goodman



FORT GARRY
FIRE TRUCKS

trailer wizards
Local Service... Nationwide

CMT
CASSIDY MANUFACTURING

C&T
RENTALS

United Rentals

THE ROSEDALE GROUP
...Our people make it happen.

KAYCAN

\$230 M PRIVATE CAPITAL INVESTMENT IN OUR ECONOMY

Industry Leaders at CentrePort



Canada's Centre for Global Trade
WINNIPEG, MANITOBA





Canada's Centre for Global Trade



Canada's Centre for Global Trade
WINNIPEG, MANITOBA

CONTACTS:

Diane Gray
President and CEO
DGray@CentrePort.ca

1.204.784.1300
www.centreportcanada.ca

