

TRANSPORTATION IN NORTHERN QUÉBEC



Northern Transportation Conference 2013

October 29 - 30, 2013

TRANSPORTATION IN NORTHERN QUÉBEC

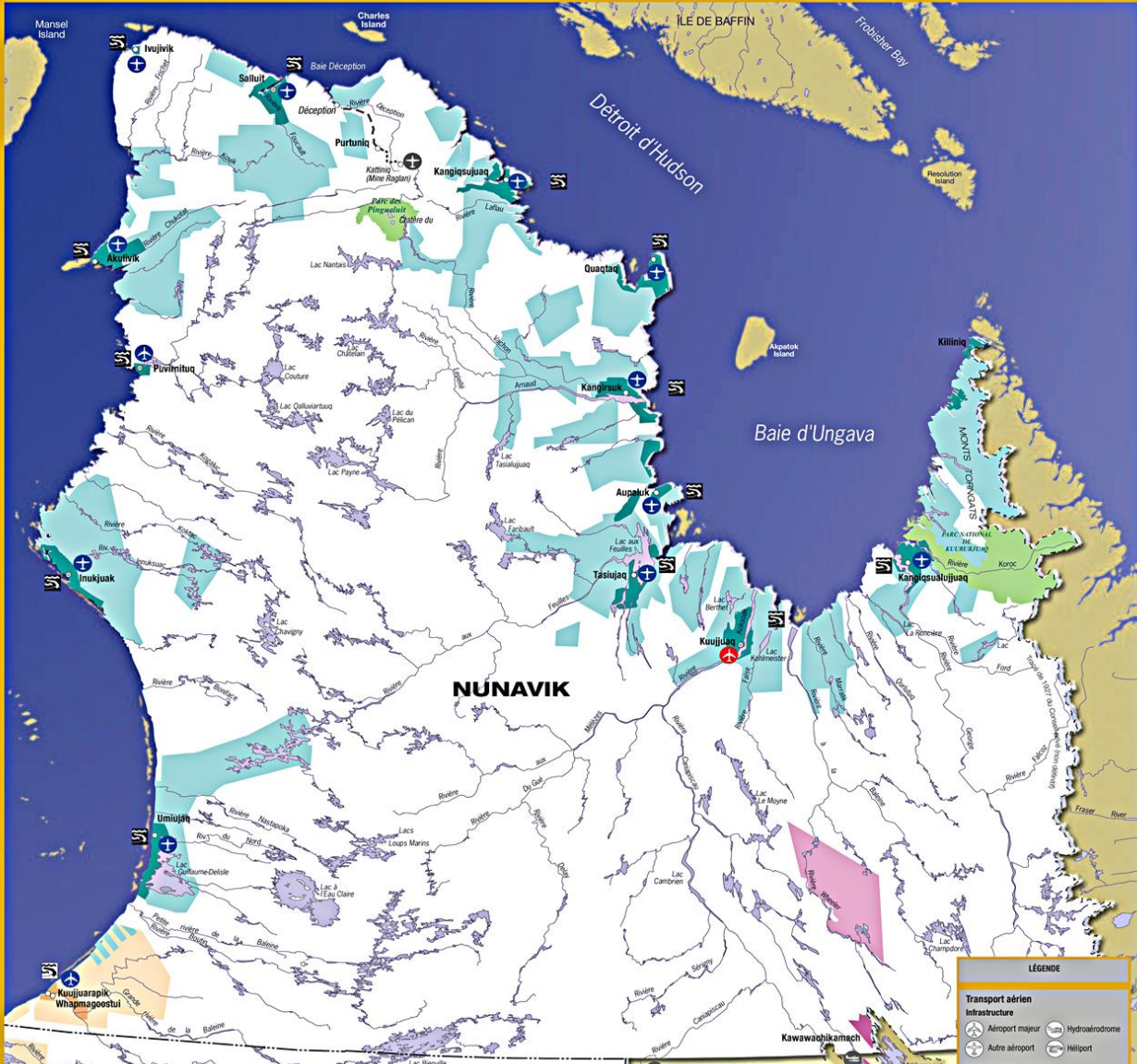
Mission of the ministère des Transports du Québec

Ensure the sustainable mobility of people and goods throughout Québec using efficient and safe transportation systems that contribute to development in Québec.

Involvement in Northern Québec

Ensure effective, accountable and innovative management of transportation networks under its responsibility, in close cooperation with its partners.

Profile of Nunavik's Transportation Networks



TRANSPORTATION IN NORTHERN QUÉBEC

Major Interventions in Northern Québec

❖ Air Transportation

- Construction / renovation of buildings (terminals, hangars)
- Gravel resurfacing of runways
- Replacement of the lighting system
- Rehabilitation of roads providing access to airports



Puvirnituk's new and old terminals



Puvirnituk's new terminal – interior view

TRANSPORTATION IN NORTHERN QUÉBEC



❖ Marine Transportation

- Financial assistance for the construction and maintenance of Nunavik's marine infrastructures
- Grading of access ramps and of service areas
- Stabilization of the riprap
- Equipment maintenance



Puvirnitug



Kangiqsuk

TRANSPORTATION IN NORTHERN QUÉBEC

Major Interventions in Northern Québec

❖ Adaptation to Climate Change

Implementation of a research program on how to adapt infrastructure to climate change



Umiujaq



Embankment - Puvirnituk

TRANSPORTATION IN NORTHERN QUÉBEC

Key issues related to the development, improvement and preservation of infrastructures in Northern Québec



TRANSPORTATION IN NORTHERN QUÉBEC

Issue: Premature damage to transportation infrastructures due to climate change

❖ Observations

- It is essential to continue research on infrastructure adaptation within the context of climate change to define new design criteria.
- The lack of basic data to support research on the impact of climate change and the adaptation needs is costly and problematic.
- There is no rehabilitation program for northern transportation infrastructures to finance adaptation work.

TRANSPORTATION IN NORTHERN QUÉBEC

Issue: Implementation of Airport Regulation

❖ Observations:

- Lack of support from Transport Canada in the implementation of the regulation;
- Uniform application of the regulation without risk analysis or cost-benefit assessment and regardless of:
 - the airport size;
 - the activity level;
 - the availability of human and financial resources.

TRANSPORTATION IN NORTHERN QUÉBEC

Issue: Funding for the Maintenance and Improvement of Airport and Marine Infrastructures

❖ Observations:

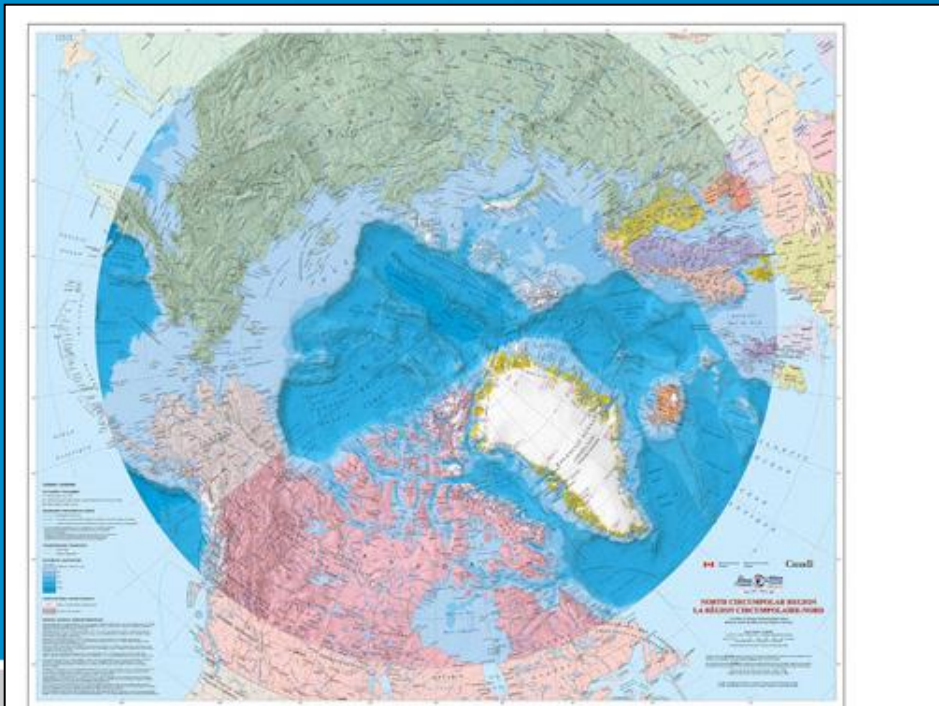
- The federal government helped fund the construction of airport and marine infrastructures.
- Its financial participation in maintenance or improvement costs is possible only through specific programs.
- It would be important to define a shared and sustainable financial plan with the federal government, as specified in the Sanarrutik Agreement.

TRANSPORTATION IN NORTHERN QUÉBEC

Issue: Québec's Exclusion from Canada's Northern Strategy

❖ Observation:

- Québec cannot benefit from the expertise and funding available under the strategy.



TRANSPORTATION IN NORTHERN QUÉBEC

- Québec is pleased to note that the Prime Minister of Canada recognized, at the eighth annual Arctic tour, that Nunavik is part of the Arctic.
- Québec wishes that this recognition were expressed in federal strategies, policies or programs that support Northern Canada.
- Québec would like equal treatment with the territories and expects its competencies and territorial integrity to be respected.

TRANSPORTATION IN NORTHERN QUÉBEC

❖ Conclusion

- Significant role of the federal government in knowledge development and sharing;
- Need to implement cooperation mechanisms between both levels of government in order to:
 - enable better intervention planning;
 - ensure infrastructure durability;
 - meet the governments' joint commitments.



An aerial photograph of a small town nestled in a valley. The town features a mix of colorful buildings, including a prominent blue-roofed structure. The surrounding landscape is rugged, with rocky terrain in the foreground and rolling hills in the background under a cloudy sky.

Thank you for your attention!