



CANADIAN HUMANITARIAN RELIEF OPERATIONS (HUMRO)

Major Paul Gillies



OUTLINE

- Introduction
- Strategic Environment
- Operational Design
- Questions





INTRODUCTION



INTRODUCTION

- The Disaster Assistance and Response Team (DART) or Équipe d'Intervention en Cas de Catastrophe (EICC) was created on 1 July, 1996, after the Canadian Forces (CF) deployment to Rwanda in 1994. Although the CF contribution to Rwanda was useful, it was an ad hoc organization, which required a relatively long period to deploy.
- The Canadian Government recognized the requirement for the establishment of a CF capability that could rapidly respond to international humanitarian crises and therefore the DART was designed, organized, equipped and manned.



INTRODUCTION

- In 1999, a high-readiness, pre-positioned facility was specifically built in Trenton to support DART operations.
- Equipment maintenance was initially through ad-hoc agreements, but the DART Enhancement Project established a full time detachment, including a medical detachment to:
 - preposition DART Vehicles, Equipment and Medical supplies;
 - support mounting and the deployment of a DART; and
 - provide an air sustainment hub.



DART DEPL HISTORY

Since 1996, the DART, or parts of it, have deployed eight times on the following operations:

- Op CENTRAL - full DART to Honduras in Nov 98
- Op TORRENT – full DART to Turkey in Aug 99
- Op STRUCTURE – full DART to Sri Lanka in Dec 04
- Op PLATEAU – full DART to Pakistan in Oct 05
- ISST/DART Recce to Indonesia in May 06*
- ISST/DART Recce to Thailand (Burma) in May 08
- Op HORATIO - JTF HQ and HMCS St. John's to Haiti in Sep 08
- Op HESTIA - Full DART and then JTF to Haiti in Jan 10
- ISST to Pakistan Floods in Sep 10

*ISST = Interdepartmental Strategic Support Team



STRATEGIC ENVIRONMENT



RENAISSANCE CONCEPT

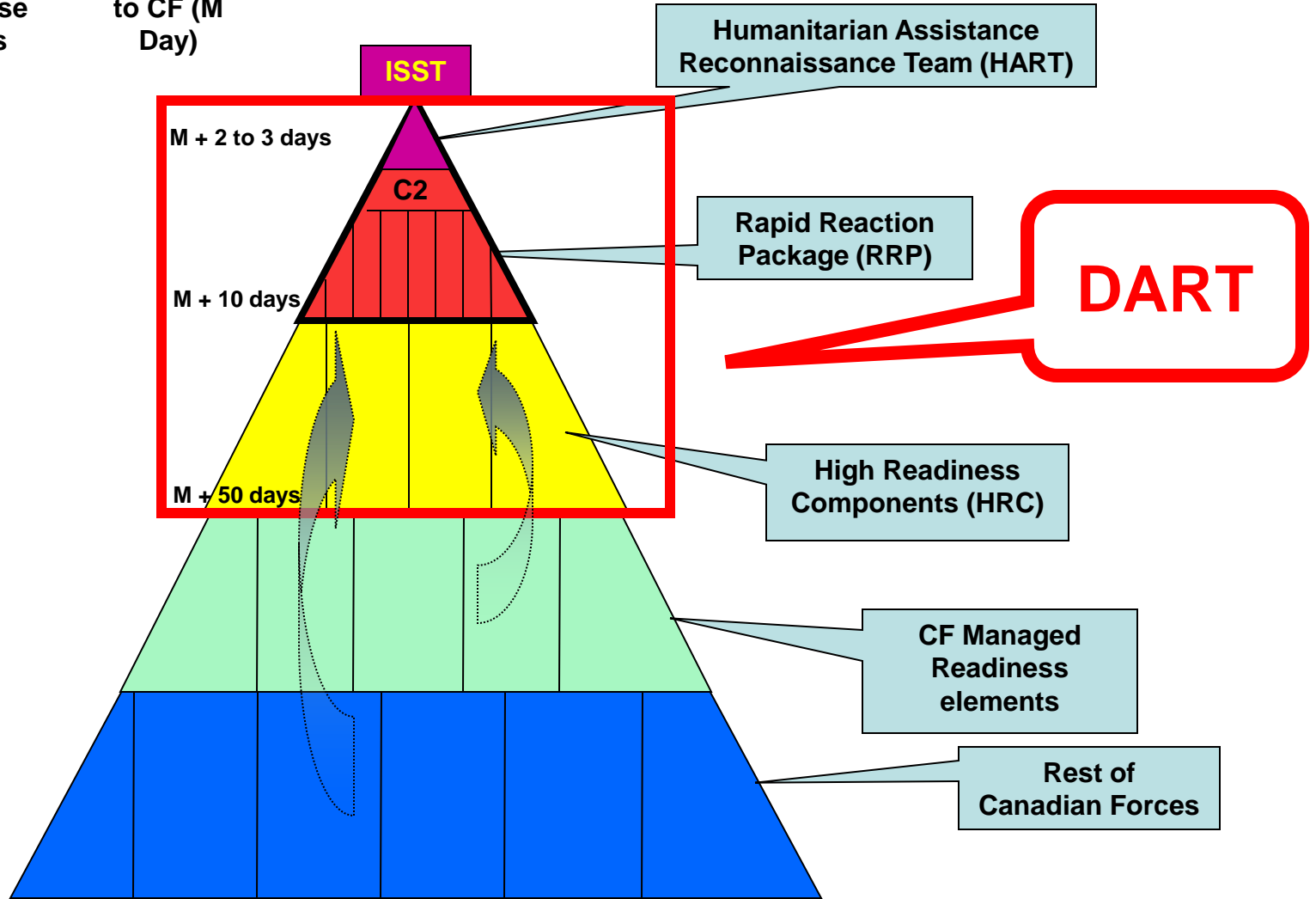
Disaster Response Stages

GoC Tasking to CF (M Day)

Rescue

Relief

Recovery





RENAISSANCE CAPABILITIES

Movement Control

Force Protection

Primary Medical Care

Combat Camera

Aviation

Potable Water

Light Urban Search & Rescue

Boats

Route Clearance

Provide support during all phases to save lives and lessen human suffering



Rescue
Immediate Lifesaving

(Approx 1 to 7 Days)

Relief
Stabilization

(Approx 8 to 50 Days)

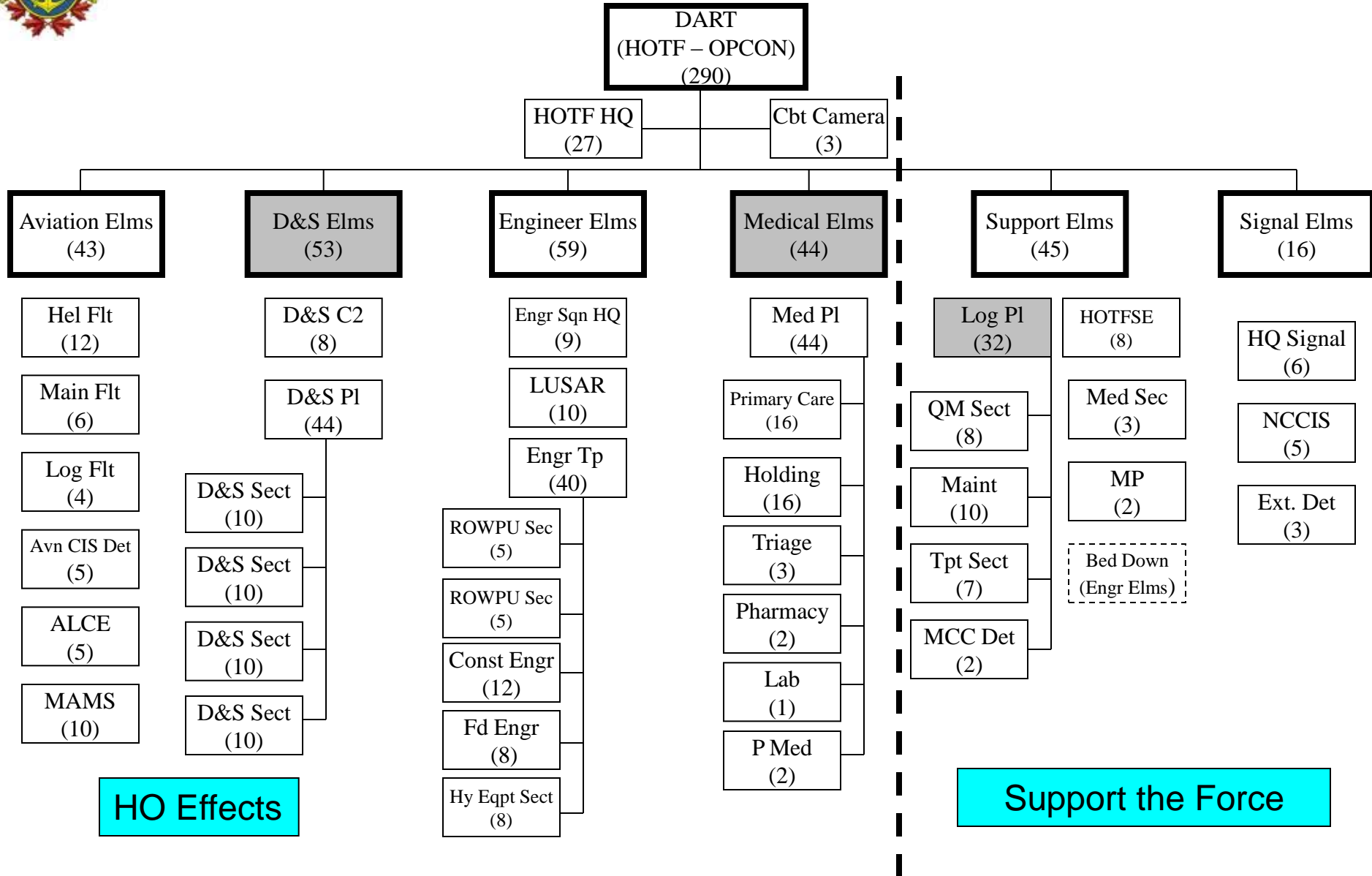
Recovery
General Recovery

(50 Days +)

RENAISSANCE



DART CAPABILITIES





OPERATIONAL DESIGN



SCHEME OF MANOEUVRE

One posture and five phases:

- Mandated Readiness Posture
- Warning
- Preparation
- Deployment
- Employment
- Redeployment and Reconstitution



SCHEME OF MANOEUVRE

Mandated Readiness Posture

- DART personnel identified and trained on an annual cycle
- equipment and supplies are maintained at the 1st Cdn Div HQ High-Readiness Detachment (HRD) in Trenton
- Readiness:
 - HART
 - 12hrs Notice To Move
 - DART Main Body
 - 48hrs Notice To Move





THE HRD

- **36,000 sq ft**
- **19 full time personnel including:**
 - logistics
 - engineering
 - civilian staff
- **Primary function is to maintain vehicles, equipment, medical supplies and personnel readiness levels**





DART VEHS AND EQUIP

- 75 support vehicles and equipment
- Reverse Osmosis Water Purification Units (ROWPU)
- modularized Rapid Reaction Package (RRP) modules with:
 - medical supplies
 - engineer equipment
 - Light Urban Search and Rescue (LUSAR)
- 14 days of supply of water
- 7 days of supply of rations



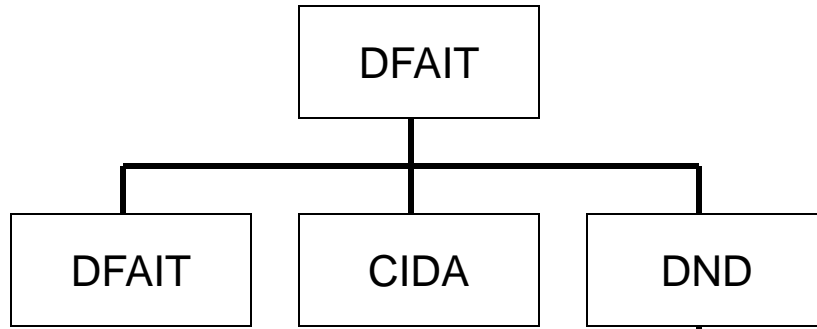


ISST AND HART



ISST

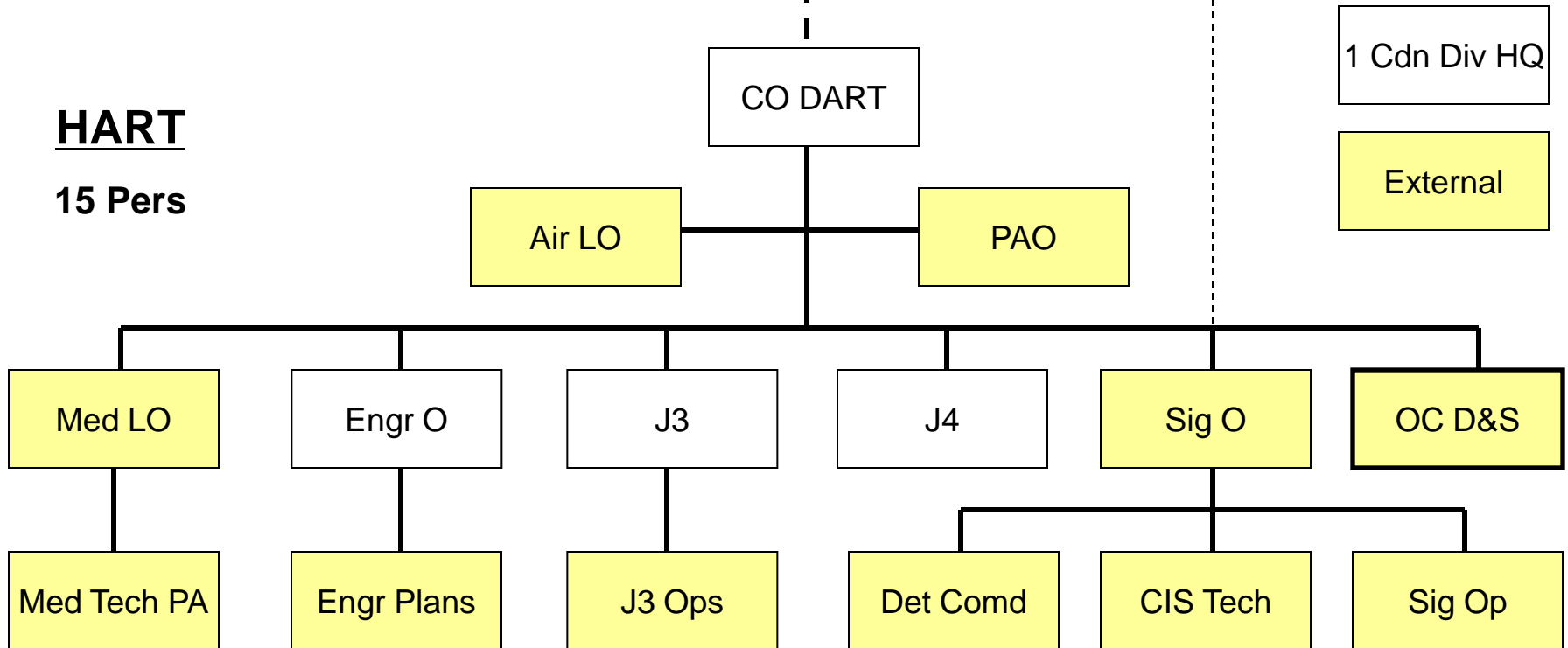
5 Pers



A signaller may deploy with the ISST if the HART is not deployed simultaneously.

HART

15 Pers



1 Cdn Div HQ

External

HART ACTIVITIES

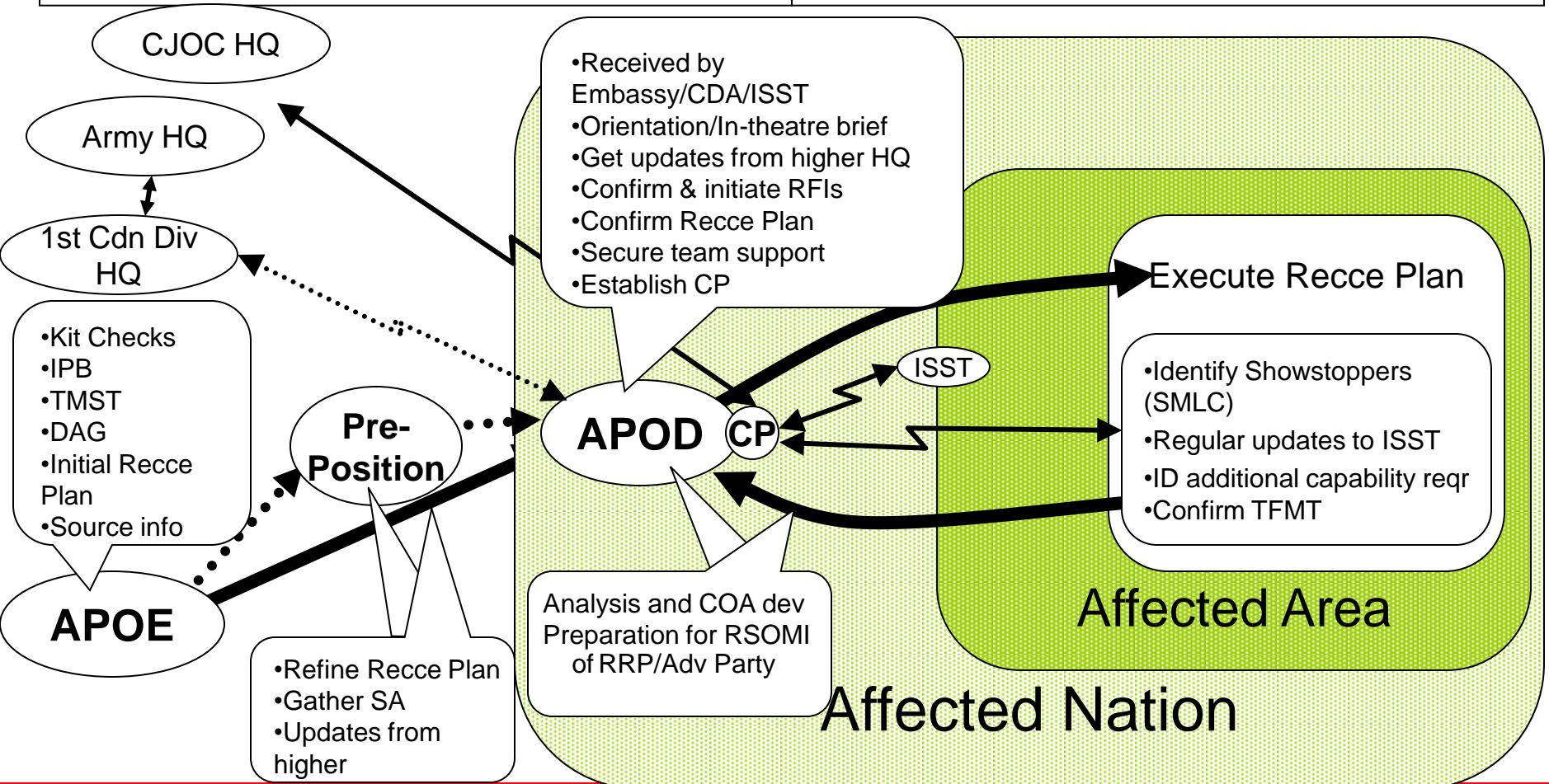
Responsibilities of the Recce Team

1. In-theatre deployment feasibility (i.e., *can* a RRP/HOTF be deployed).
2. Gather info/development of COAs/CONOPS.
3. Prepare for arrival of the RRP/Adv Party.

Key Considerations for HOTF Support (SMLC)

(go/no-go criteria)

1. Security: permissive (i.e., looting and petty theft)
2. Medical: ready access to R3 and avail of tac, op & strat evac.
3. Logistics: APOD capacity; LOCs open.
4. C2: comms restrictions





HUMRO DEPLOYMENT



CANADA

Canadian AO

Main Body (-)

Main Body (-)

Possible Staging Base

THIRD NATION

Airfield



AFFECTED NATION

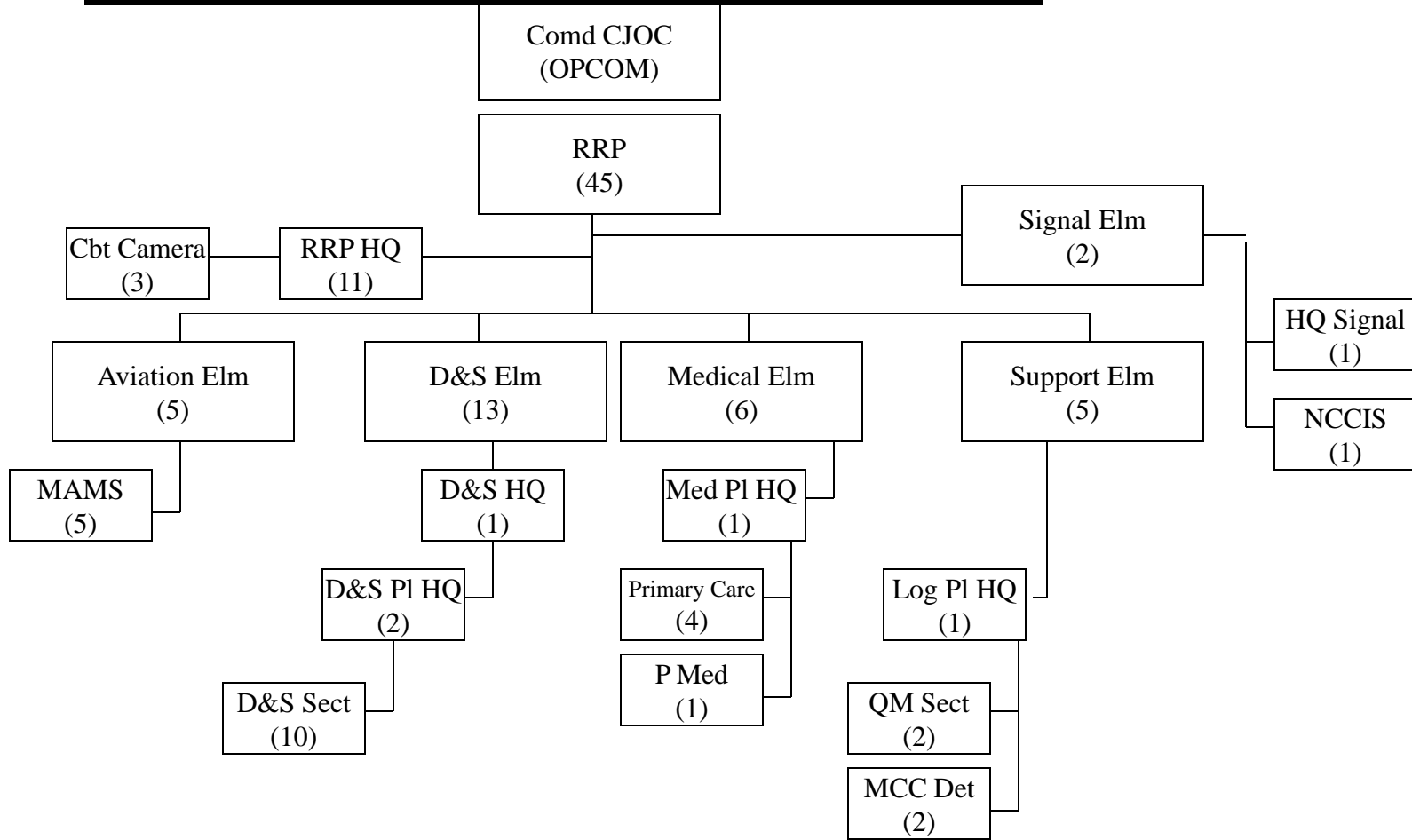
APOD
Det

Port or
Beachhead

We lead ... Nous menons ...

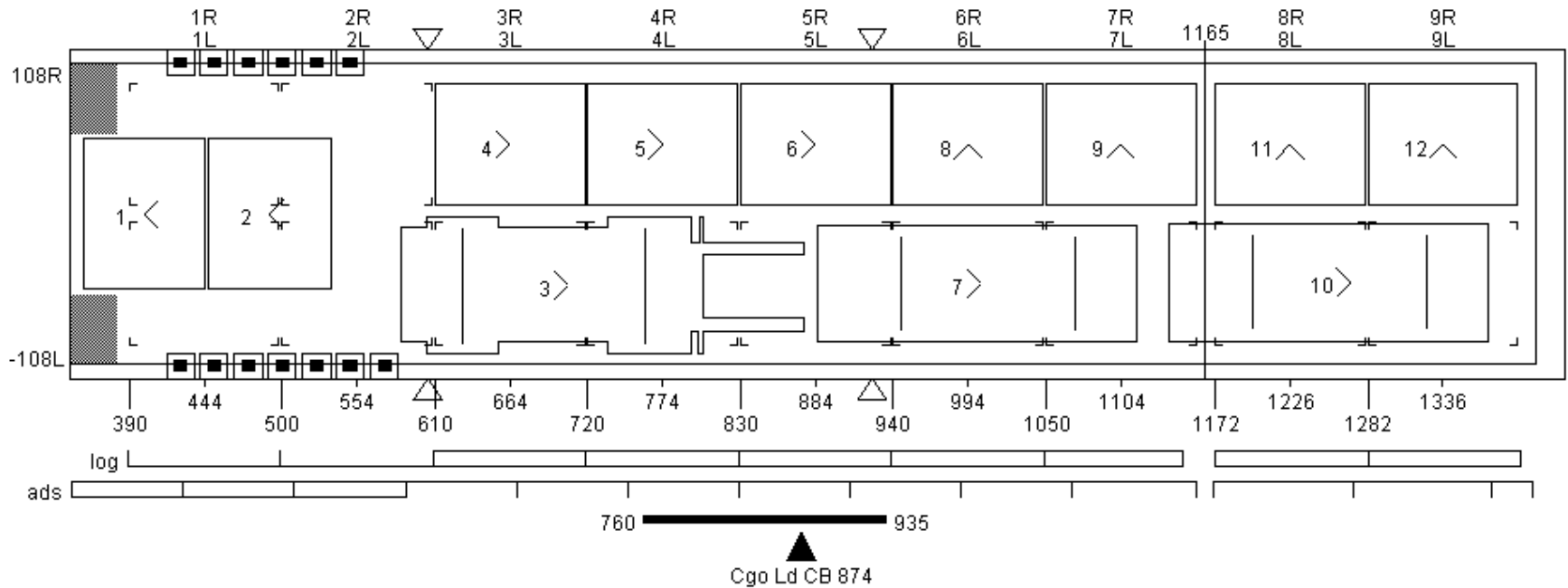


CORE OF THE RRP





CORE OF THE RRP (2)



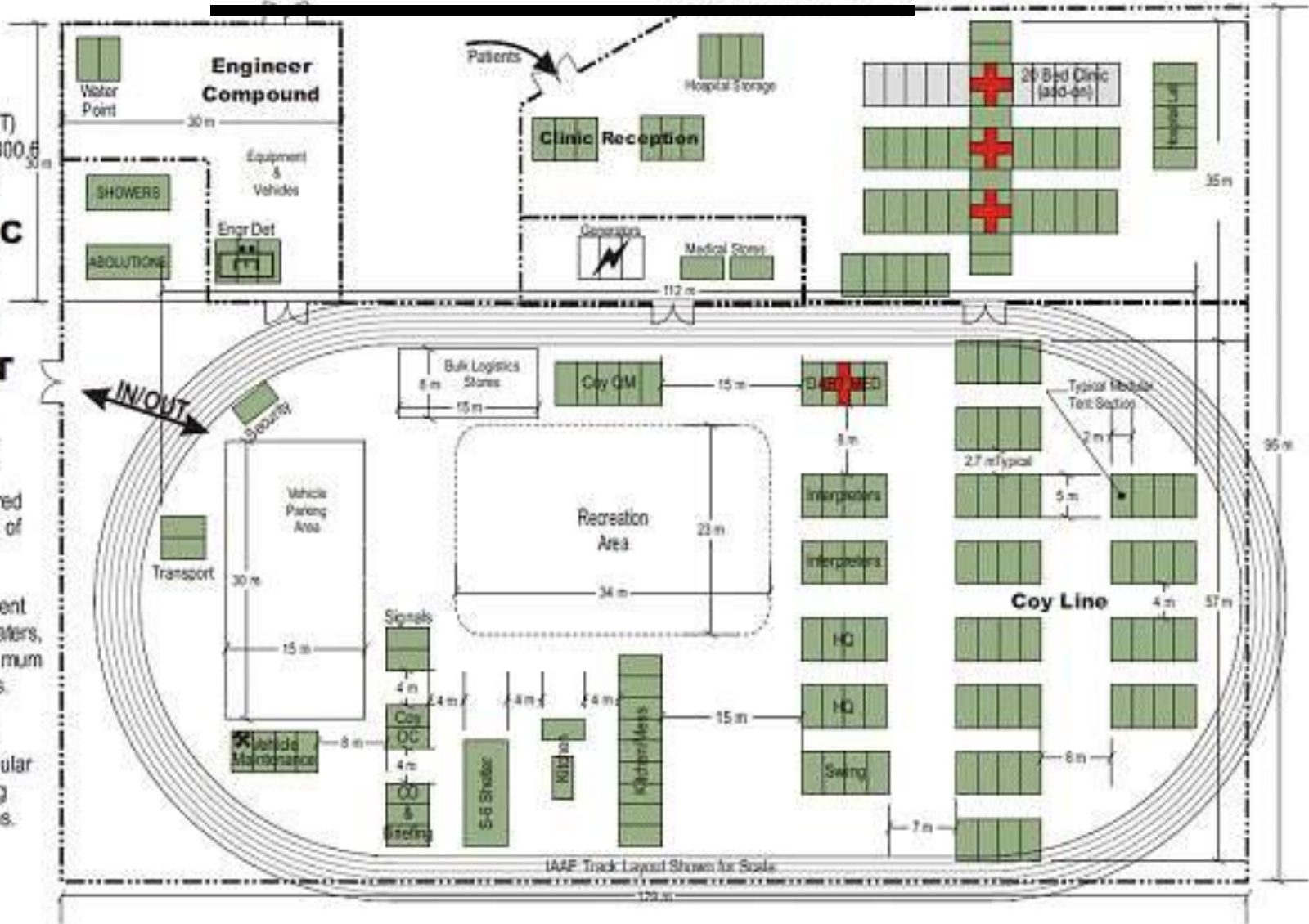
CAMP LAYOUT

Tab A
Appendix 4
Annex V
3350-95 (DART)
Support Plan 800.6
March 2002

GENERIC DART CAMP LAYOUT

NOTES:

1. Vegetation cleared around all sides of tents to 3m.
2. Support equipment (generators, heaters, etc.) kept a minimum of 3m from tents.
3. No more than 4 sections of modular tent for sleeping accommodations.





CAMP LAYOUT (2)





SCHEME OF MANOEUVRE

- Employment. Begins when the HUMRO Task Force (HOTF) declares OPRED for employment and ends once the HOTF ceases operations.



SCHEME OF MANOEUVRE



- Employment
 - Stage 1
 - HOTF declares OPRED for employment (if RRP deployed)
 - RRP begins operations (if deployed)
 - Advance Party prepares for arrival of Main Body (if required)



SCHEME OF MANOEUVRE

- RRP Operational Options
 - All elements located in one place
 - Aviation and other elements located in different locations



SCHEME OF MANOEUVRE

- RRP Tactical Options
 - Static camp located near the air head
 - Mobile teams (with Light Urban Search And Rescue, medical, engineer and Defence & Security elements) supported by aviation
 - Other?

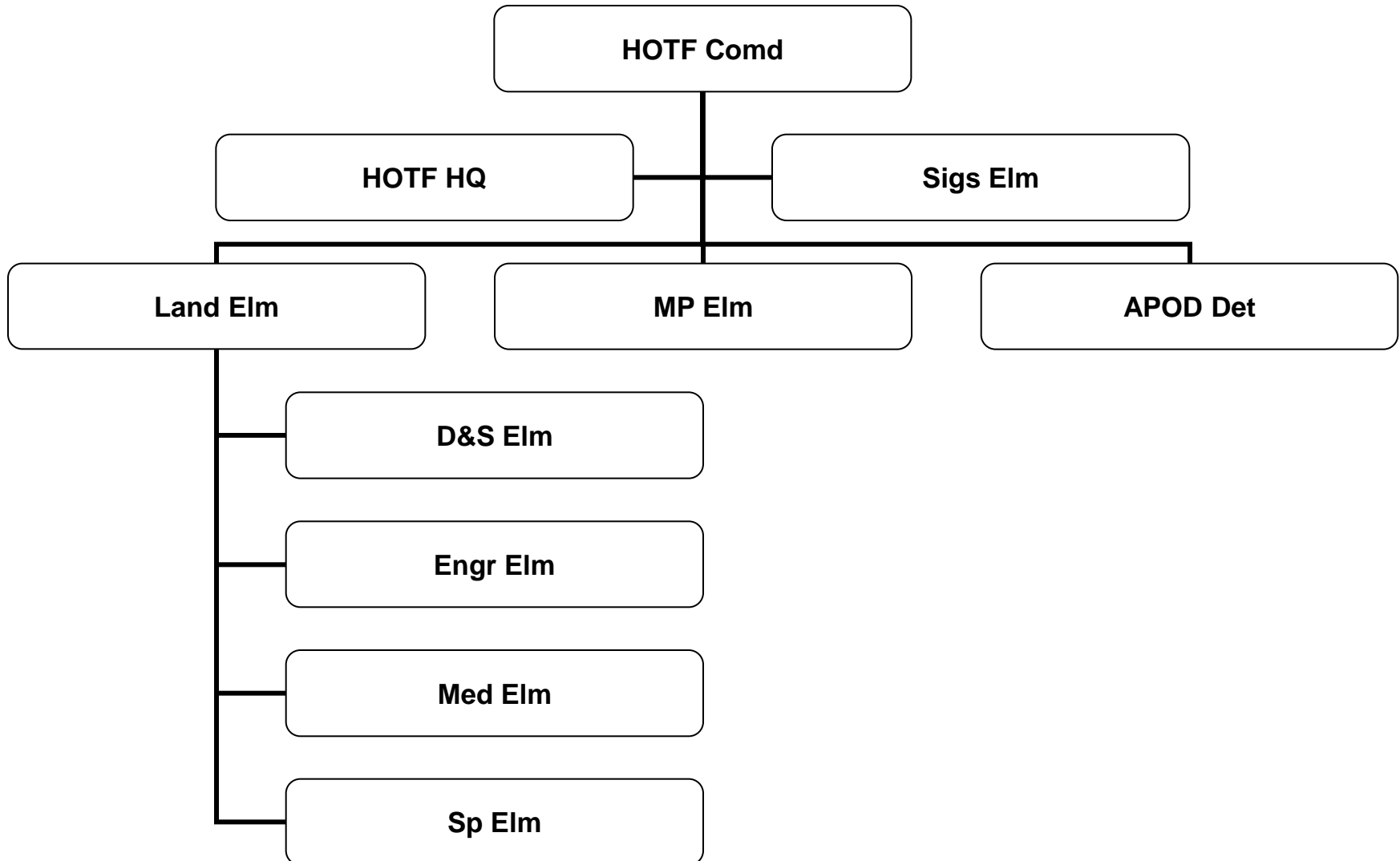


SCHEME OF MANOEUVRE

- Employment
 - Stage 2 – Relief Ops
 - RRP folds into Main Body or redeploys
 - Main Body begins operations (if required)

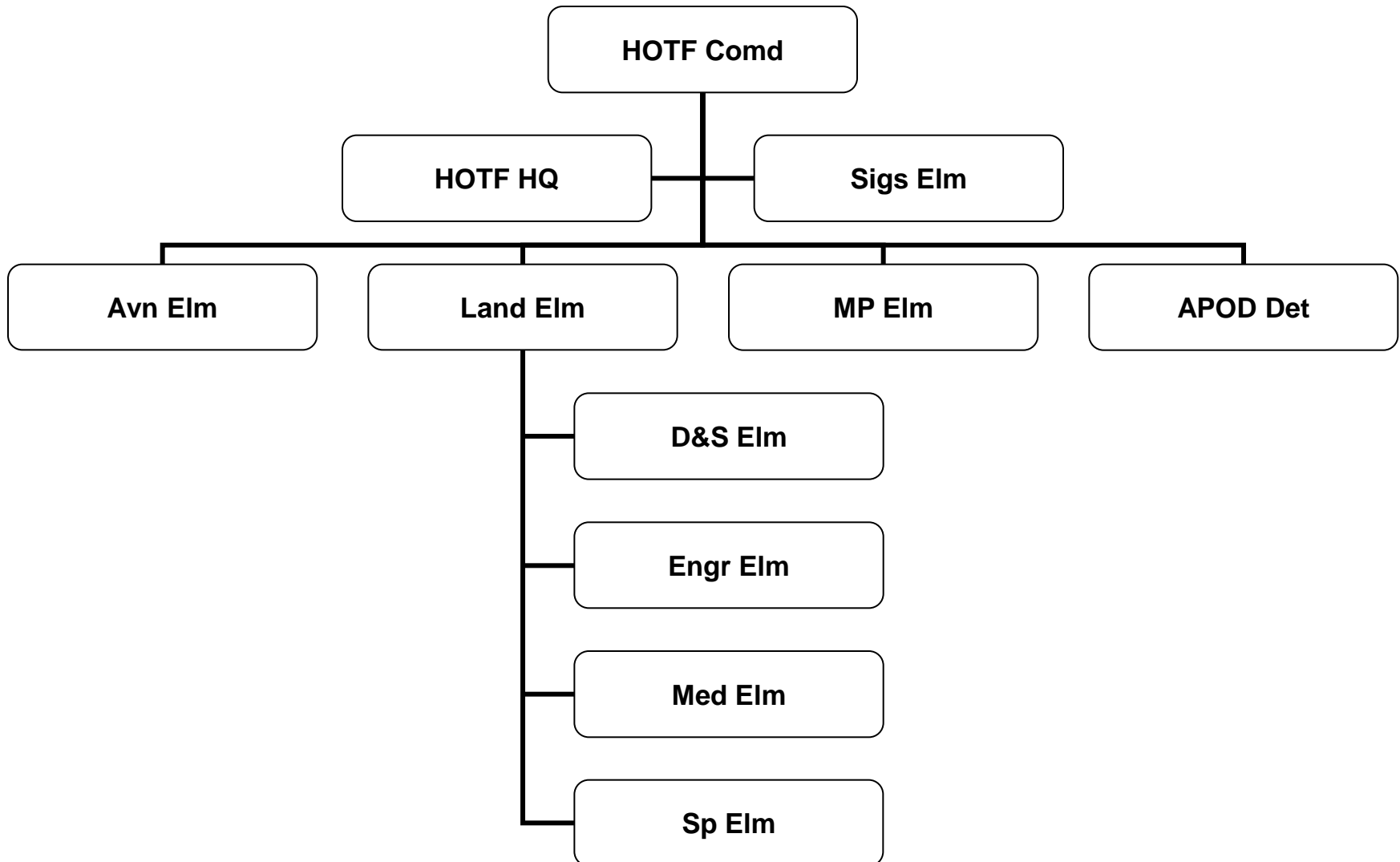


OP OPTIONS (1)



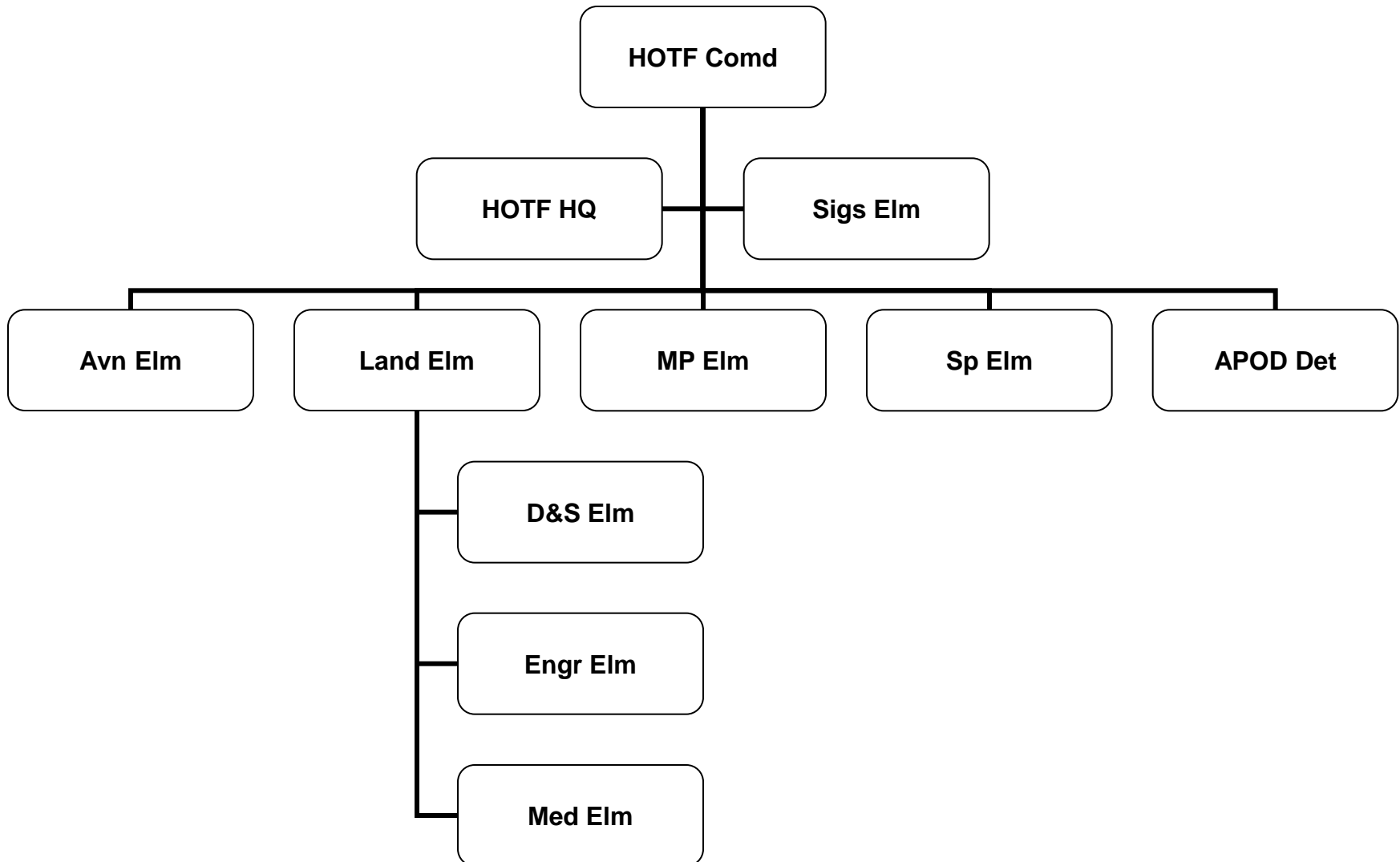


OP OPTIONS (2)



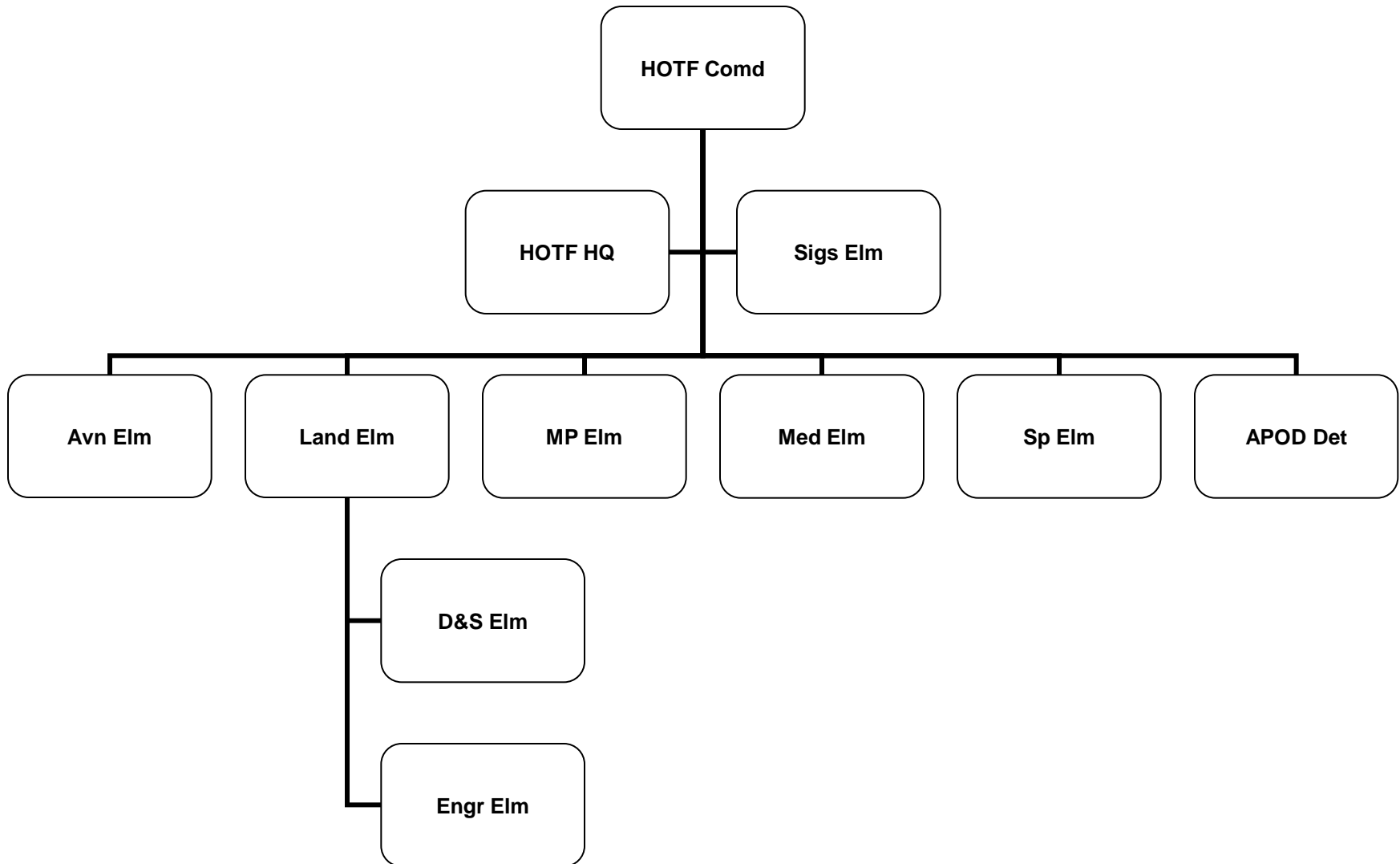


OP OPTIONS (3)



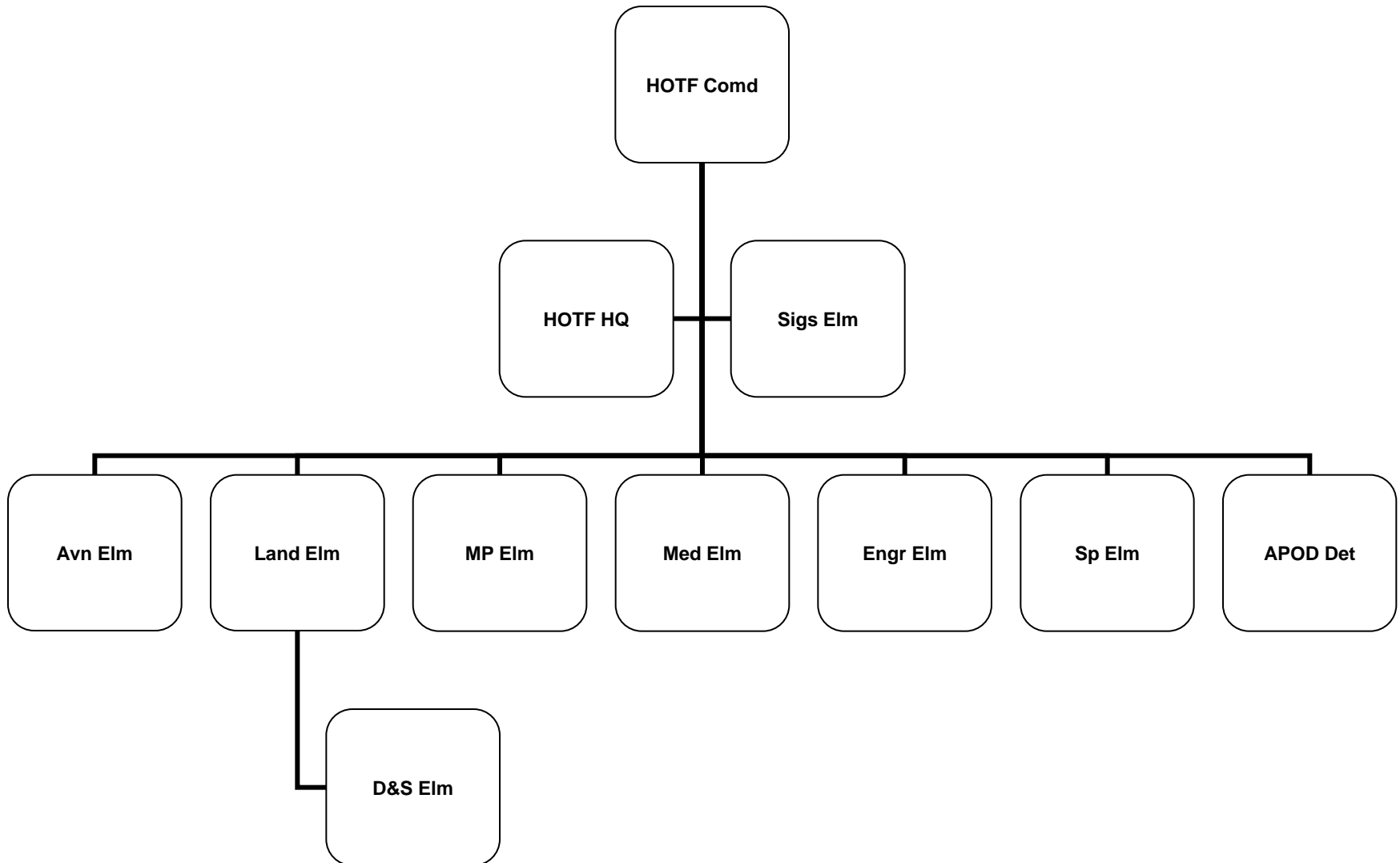


OP OPTIONS (4)





OP OPTIONS (5)





SCHEME OF MANOEUVRE

- HOTF Tactical Options
 - Medical
 - Centralized clinic
 - Mobile Medical Teams (MMTs)
 - Water
 - Centralized ROWPUs
 - Decentralized ROWPUs (with force protection and medical support)



SCHEME OF MANOEUVRE

- Employment
 - Stage 3 – Cease Ops
 - Search for exit options or prepare for follow-on force
 - Relief Elements cease ops or deployment of Recovery Elements (if required)
 - Recovery Elements begin operations (if required)
 - TF ceases operations



SCHEME OF MANOEUVRE

- Redeployment and Reconstitution
 - Completed when the 1st Cdn Div HQ declares HOTF equipment and supplies OPRED for deployment.



SERVICE SUPPORT

- ISST/HART
 - most likely deploy via civilian airline
 - support provided by embassy/local economy, or sent from CF stocks
- Rapid Reaction Package (RRP)
 - deploy via CF airlift
 - 7 days of supply (DOS) of rations, water and meds



SERVICE SUPPORT

- HOTF Adv Party – minimum 2 DOS
- HOTF Main Body – weekly sustainment flights
- Recovery HOTF – increasing reliance on local resources



READINESS POSTURE



- **12 hrs NTM**
 - Interdepartmental Strategic Support Team (ISST)
 - Humanitarian Assistance Reconnaissance Team (HART)
- **48 hrs NTM**
 - High Readiness Components
- **Equipment**
 - Most equipment and material pre-positioned at the High Readiness Detachment (HRD) Trenton
 - Established and equipped for a planned 40 days in theatre



QUESTIONS?

